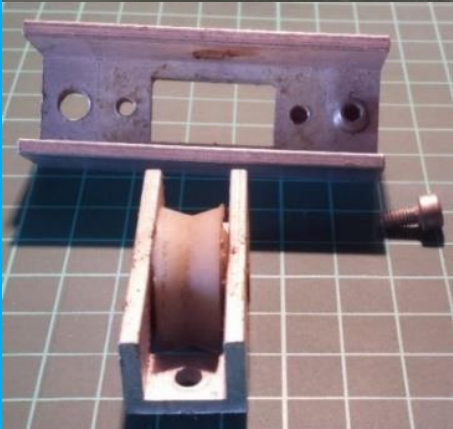


AC001

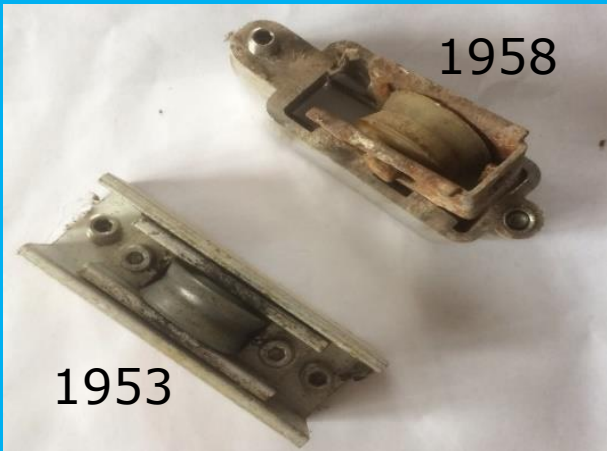


✓DGR3871

✓SGR3869



AC002

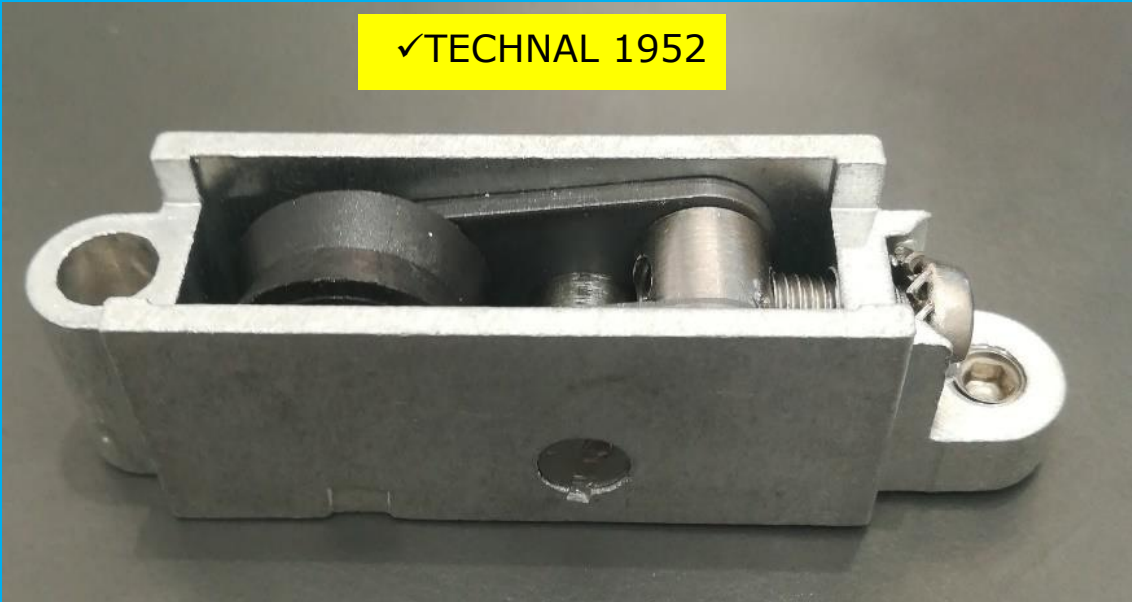


✓1958

✓DGR3871



AC003



✓DGR1785

AC004



✓DGR1785

AC005

✓TECHNAL 1957



✓DGR3871

✓DGR1785

AC006

✓TECHNAL 2952



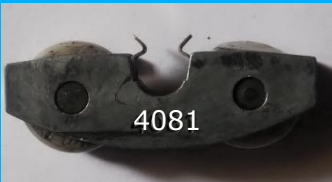
AC007

✓DGR4069



- ✓CDG3171/130°
- ✓CDG3172/150°
- ✓CDG3173/PLAT
- ✓CDG3180/R3 INOX
- ✓CDG3667/R3

AC008



4684KDA

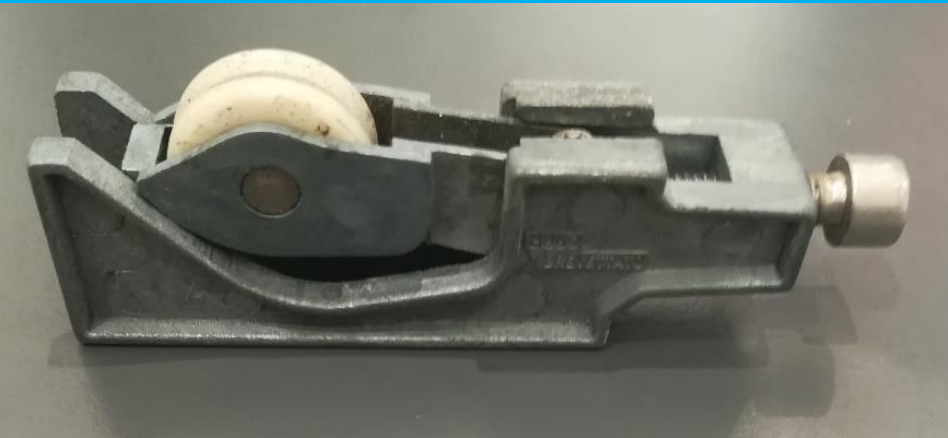


- 4016=3635/R2,2
- 4016=1785/150°
- 4017=3811
- 4373=3652 ou 4572
- 4913/4917=3811
- 4939=4218

AC009

FAPIM

SEPALUMIC



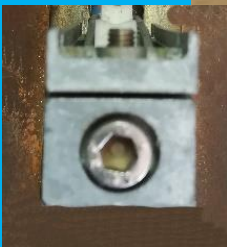
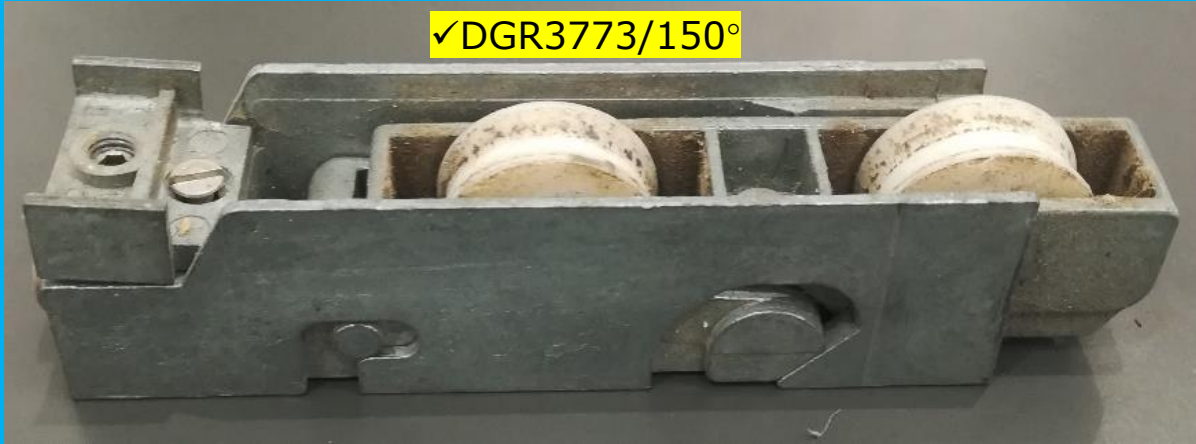
≠ DIMENSIONS

- Codes Chariot**
- : 497 → DGR3811
 - : 3860 → DGR3635
 - : 4552 → DGR3635
 - : 4372 → DGR3652
 - : 4913/4917 → DGR3811
 - : 4932 → DGR3883
 - : 4933 → DGR4572
 - : 4940 → DGR4572
 - : DVCJ → DGR3883



AC010

✓DGR3773/150°



- ✓CDG3185/150°
- ✓CDG3191/130°
- ✓CDG3179/R3

AC011

**Code Chariot : 3413A simple
: 3414A double**

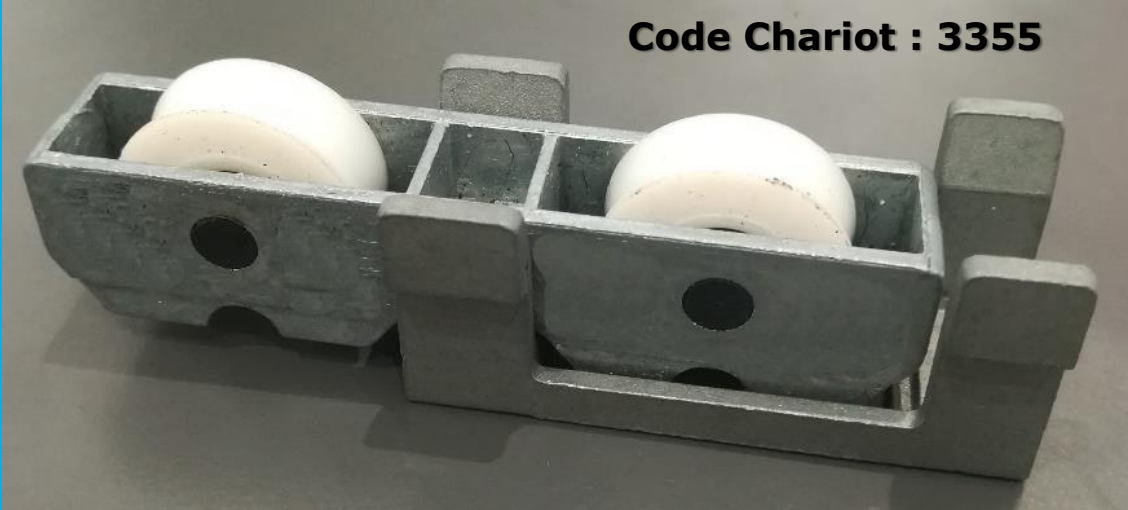


✓DGNR3414

- ✓CDG3171/130°
- ✓CDG3172/150°
- ✓CDG3173/PLAT
- ✓CDG3180/R3 INOX
- ✓CDG3667/R3

AC012

Code Chariot : 3355



✓DGR4473

- ✓CDG3185/150°
- ✓CDG3191/130°
- ✓CDG3179/R3

AC013

✓H045



AC014

✓DGR3811



AC015



✓ SGR2110 si largeur = 22,4mm Maxi

✓ DGR3871/R3 si largeur = 26,5mm Maxi

AC016

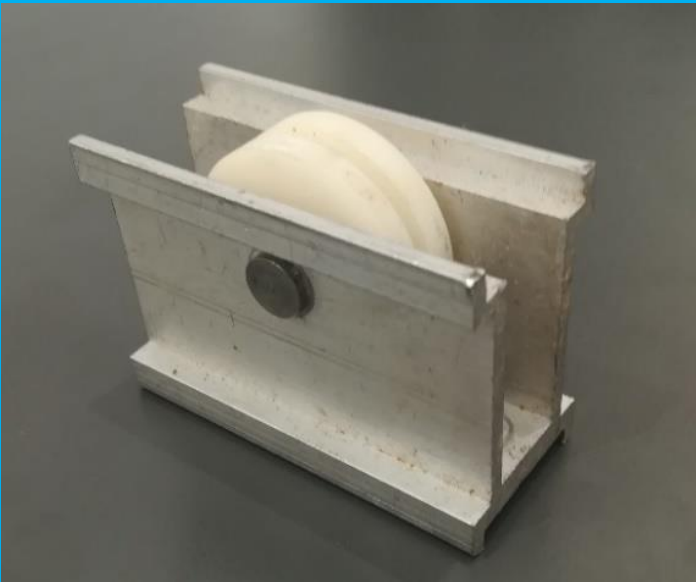


✓ SGR2110 si largeur = 22,5mm Maxi

✓ DGR3871/R3 si largeur = 26,5mm Maxi

AC017

✓ARC03



AC018

✓ARC04



AC019

✓ARC02

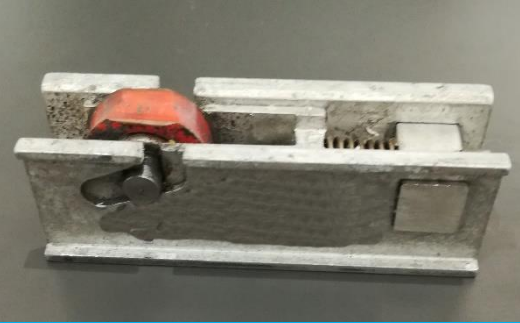
✓DGR3991



AC020

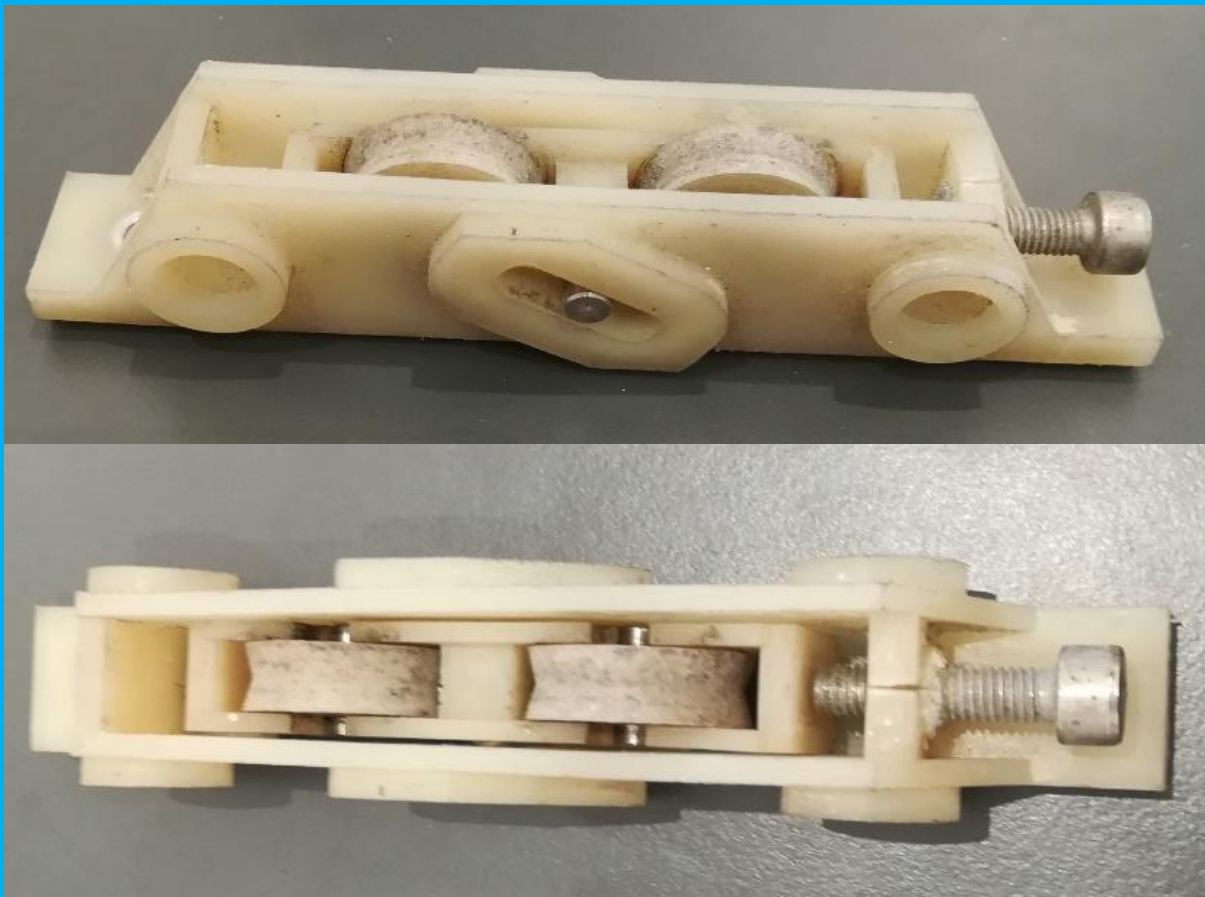
✓DGR3741

← Anciens ALUVAR →



AC021

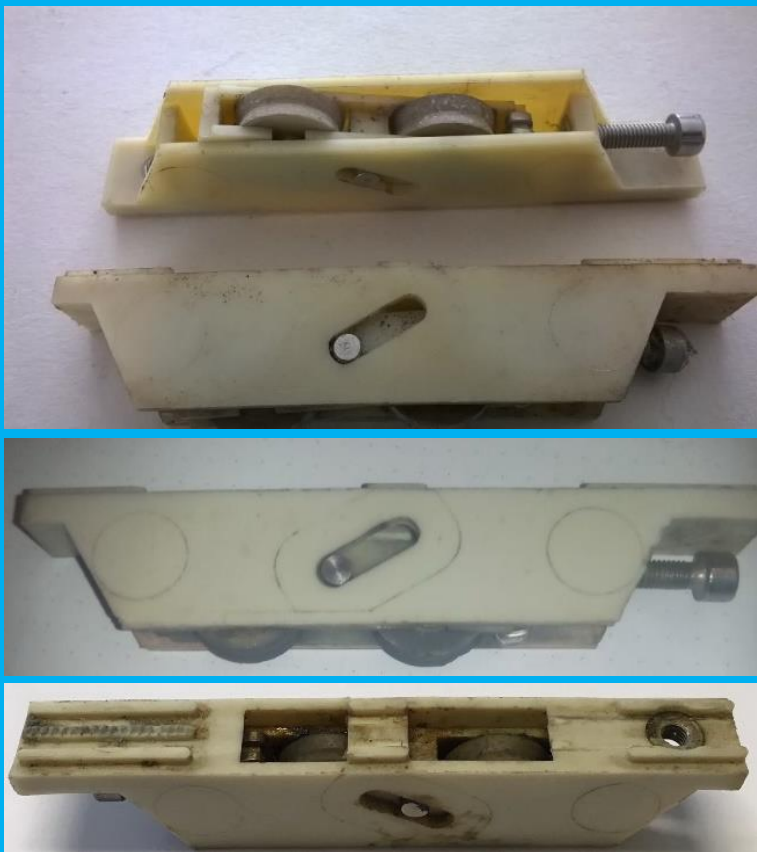
✓DGR3843



AC022

✓DGR1785

✓DGR2136

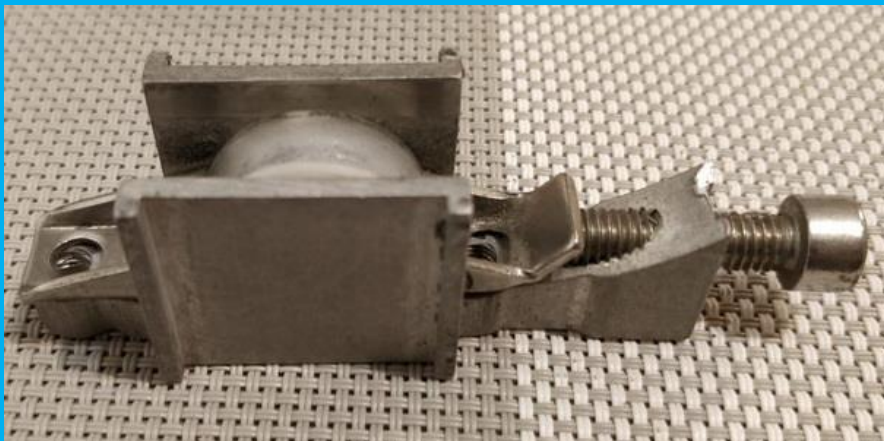


AC023



✓DGR3883

✓DGR3811



AC024

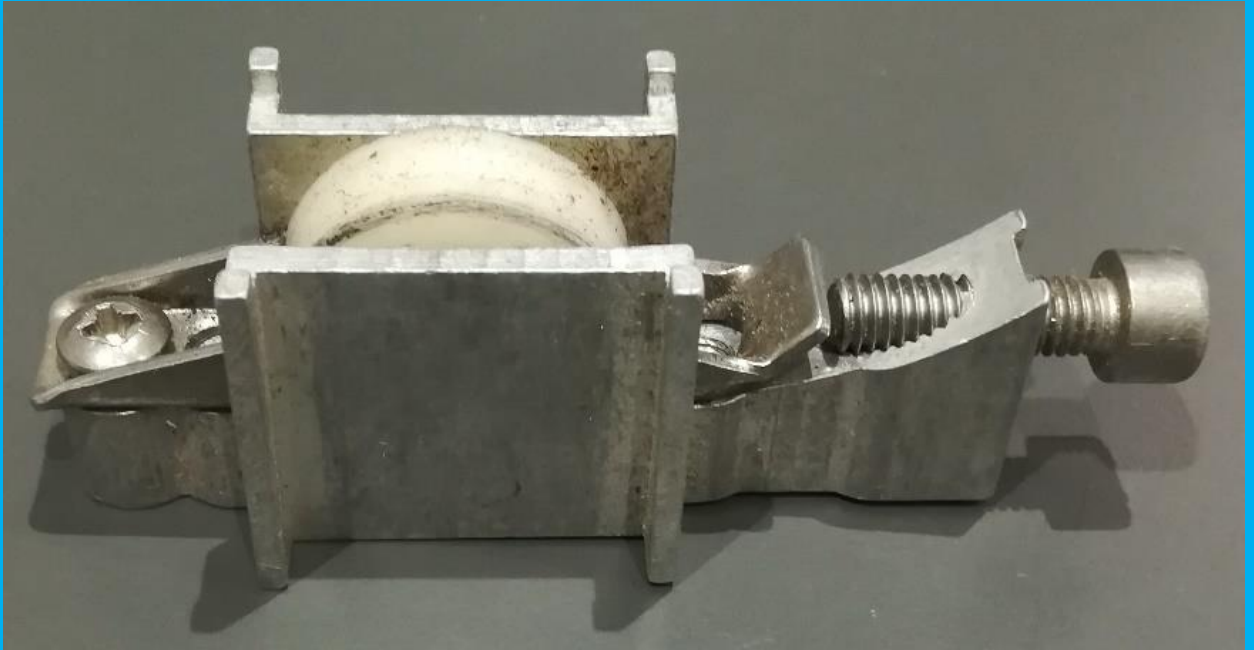


✓DGR3883



AC025

✓DGR3741 POSSIBLE



AC026

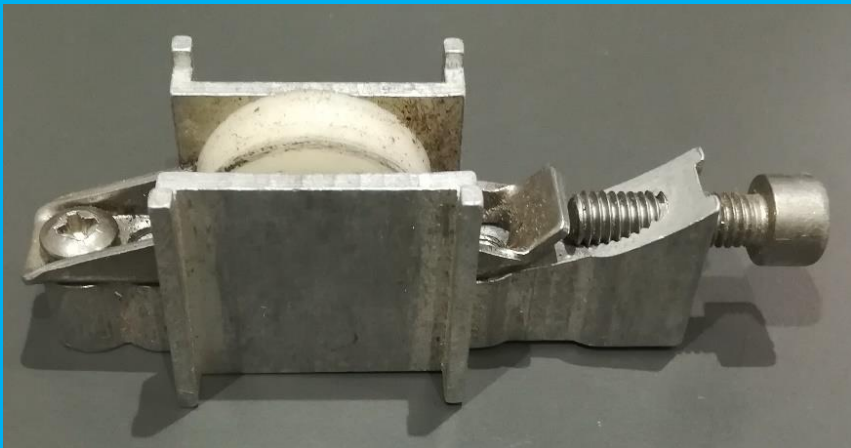
✓DGR3741 POSSIBLE



AC027

✓DGR3871

Possible



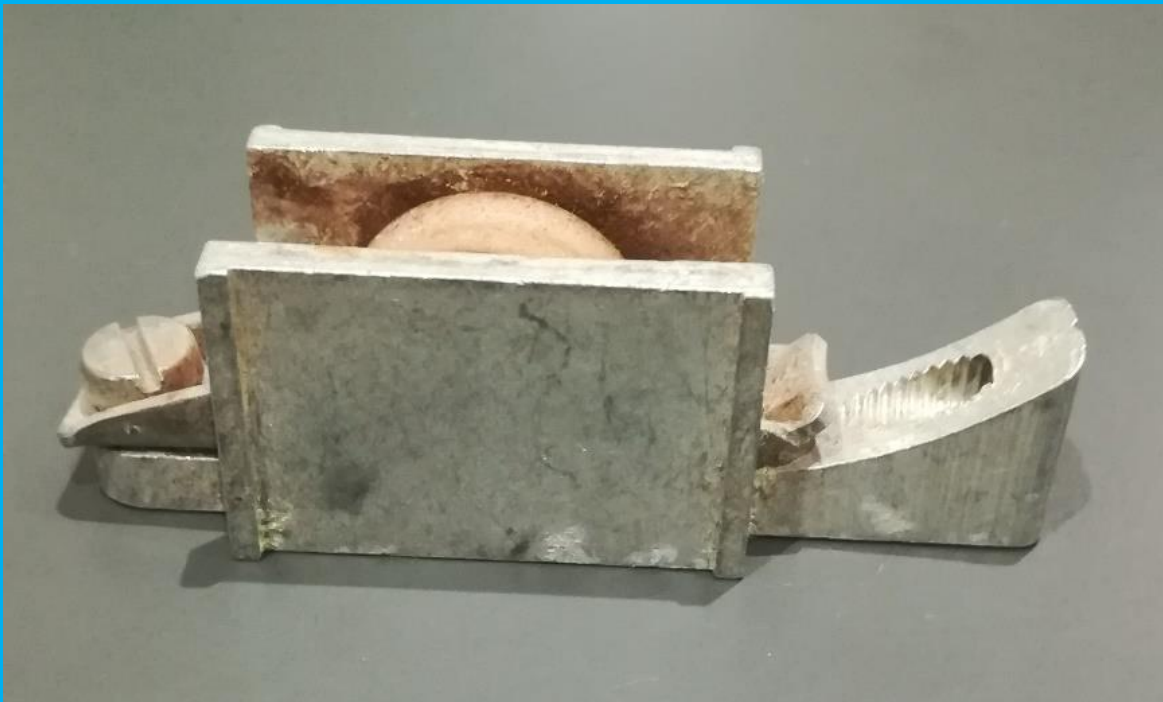
≠ DIMENSIONS



AC028

✓DGR3652

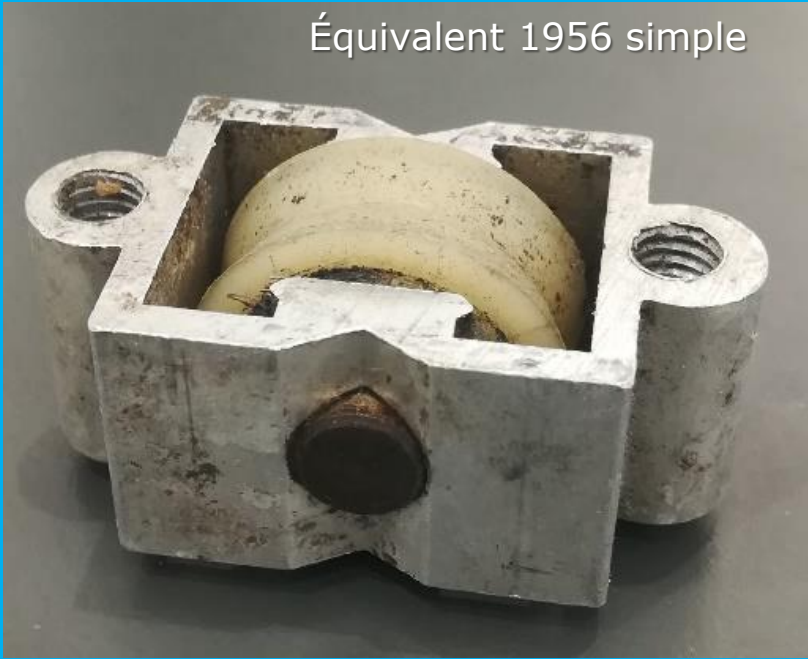
Possible



AC029

✓DGR3871

✓SGR3869



AC030

✓DGR3360

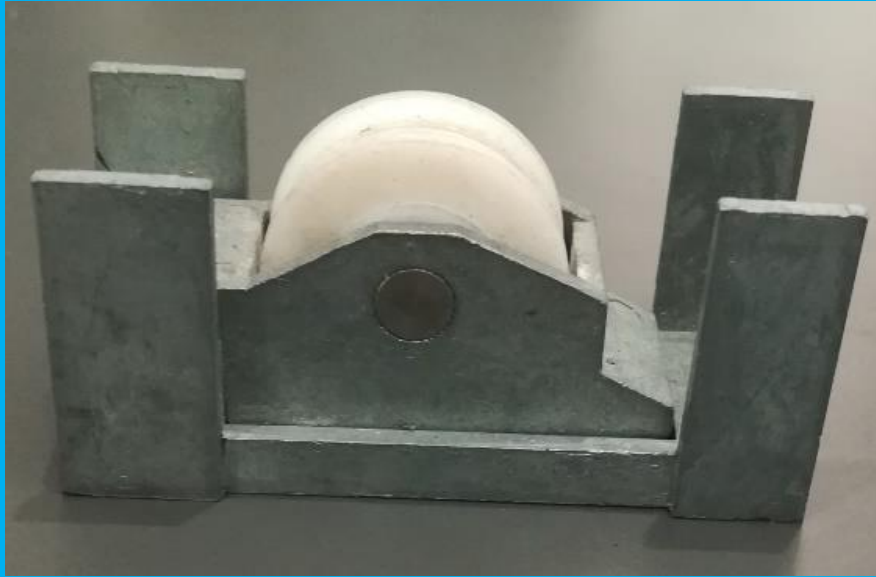


✓DGR3360-NEWS

AC031

✓DGR4218

✓SGR3869



Code cage : 3443B
Code chariot : 3447A

✓3554A→DGR3811/150°

AC032



✓3306→n'existe plus

✓3337→DGR745/PLAT

✓3338→DGR3871/150°

✓3348→DGR4544/150°

✓3354→SGR2110/R3 INOX

✓3372→DGR2057/R3

AC033



- ✓3313→DGR3773
- ✓3345→ DGNR3414/150°
- ✓3348→DGR4544/150°
- ✓3354→SGR2110
- ✓3318→DGR2062
- ✓3349→DGR4544
- ✓3369→DGR4230
- ✓3368→DGR3897



AC034



- ✓3860→DGR3635
- ✓4552→DGR3635
- ✓4940→DGR4572
- ✓4933→DGR4572
- ✓4913→DGR3811
- ✓4917→DGR3811
- ✓4933/R3→DGR4218

AC035



- ✓ 3463A→DGR3652
- ✓ 3355→DGR3811
- ✓ SGR3809 Possible

AC036

✓Code SODIAL : **QC 201**



✓**DGR3773**

AC037



✓DGR4044



AC038

FAPIM cde : chariot QAAP/cage GFAA



✓DGR4513/POLY



✓DGR4521/INOX

AC039

✓ **DGR3811**



AC040

✓ DGR3811 Possible



3447A/3443B = DGR4218
3413A = DGR3517

AC041



✓SGR4054

✓DGR4056

✓DGR3991

AC042



AC043



✓DGR3517/R3
✓DGR3883/150°



AC044

✓DGR3517



AC045

✓DGR3914/R3
Possible

✓DGR4056/R3
Possible



AC046

✓DGR3360-NEWS

À retailer en hauteur



AC047



✓SGR3809

✓DGR2136

AC048

✓DGR4002



AC049

✓SGR3993



AC050

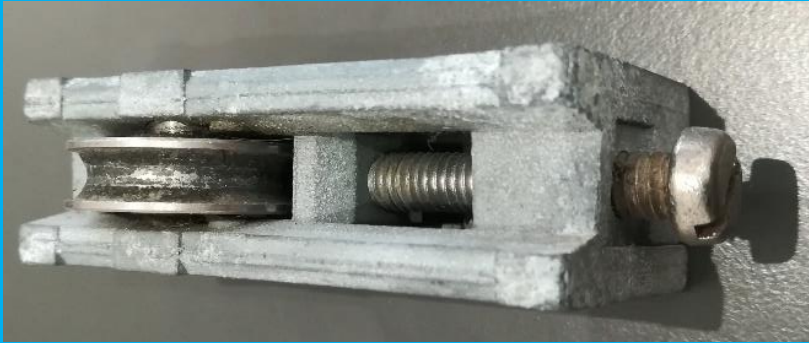
✓DGR3811



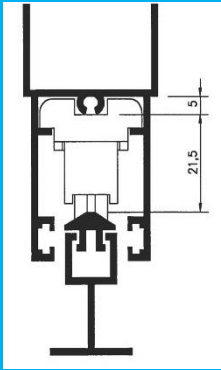
AC051



✓ DGR3924

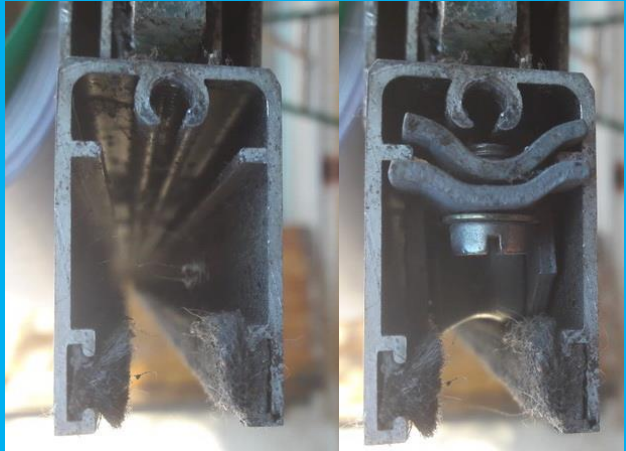


AC052



Largeur : 20mm=DGR2062

Largeur : 24mm=DGNR3317



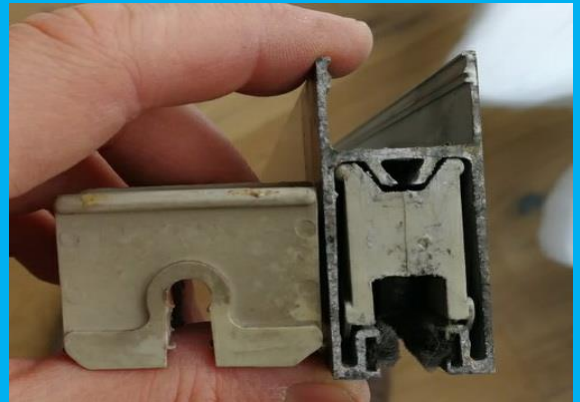
AC053



✓DGR4441/150°

✎ Existe en 20 mm de large

✎ **DGR1368**



AC054



✓DGR3811 + CALE HAUTEUR

AC055



DGR3991

AC056

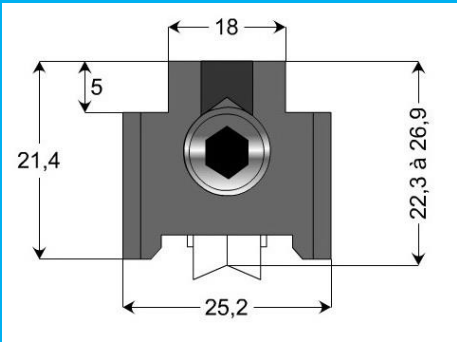


AC057

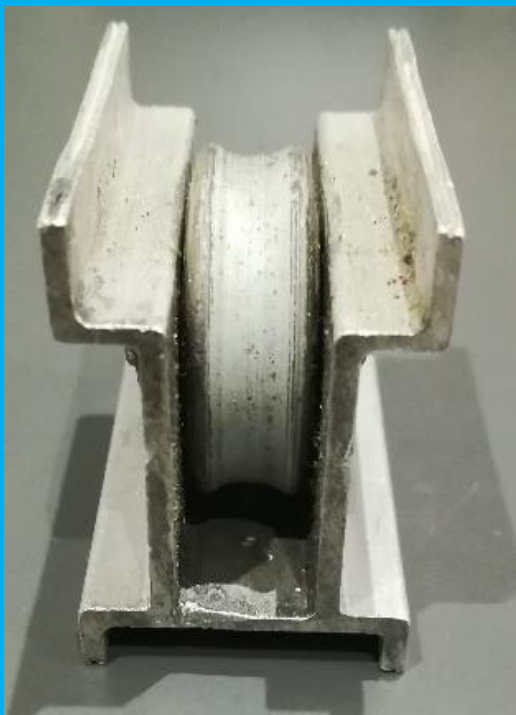
DGR3871-MODIF
SGR3869-MODIF



SCHÜCO 213563



AC058



✓SGNR3121

AC59

✓SGR6600



✓Privilégier la hauteur



AC60

✓DGR3811



AC061



✓DGRPROFILSYSTEM

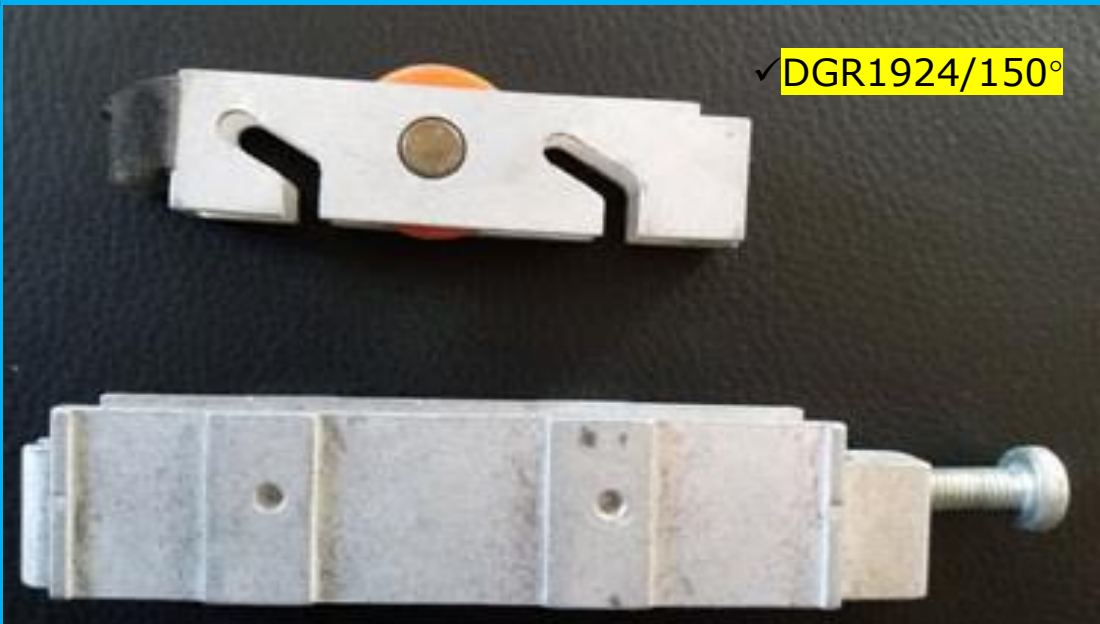
✓GU937

AC062



✓SGR3742

AC063



✓DGR1924/150°

✓DGR2136

✓DGR3652



AC064



Code sur chariot : 588R
687



✓DGR2136



✓DGR3811

✓SGR3809

AC065



✓ **SGR3809**



✓ **DGR3811**

AC066



✓ **DGR3701**



AC067



✓DGR4044

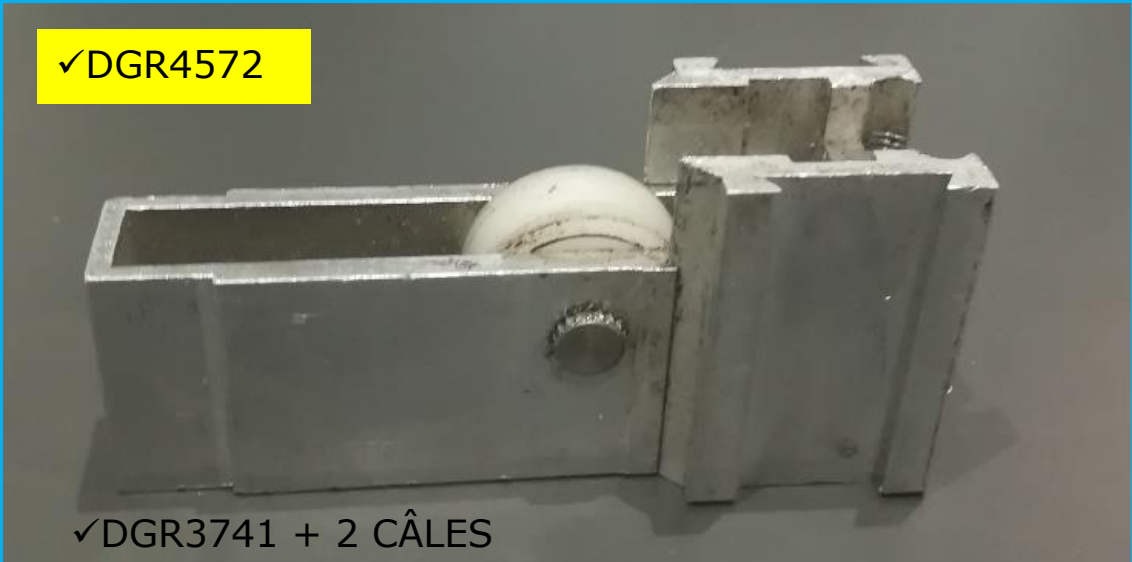
✓DGR4056

✓DGR3924



AC068

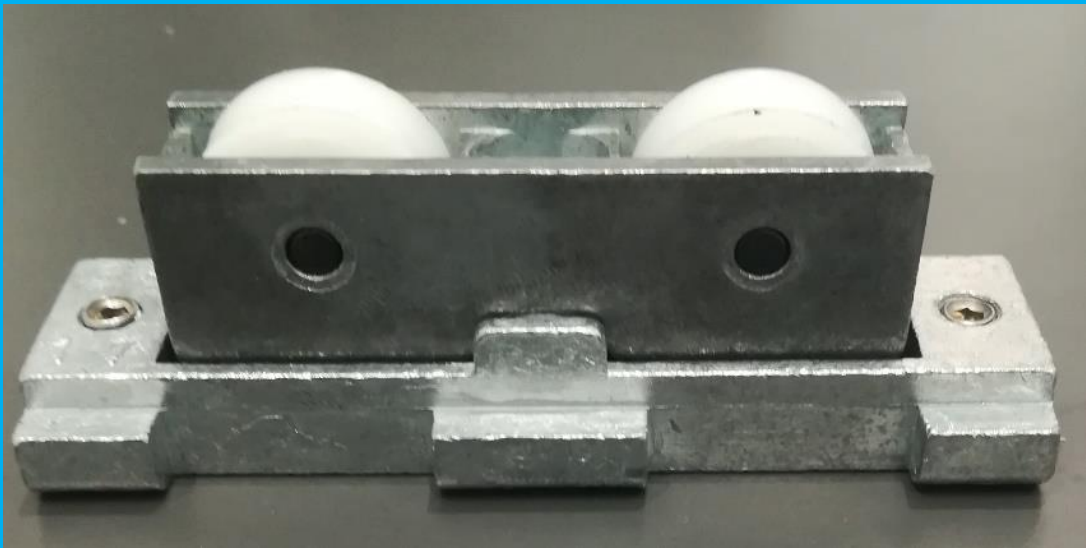
✓DGR4572



✓DGR3741 + 2 CÂLES



AC069



✓DGNR3317



AC070

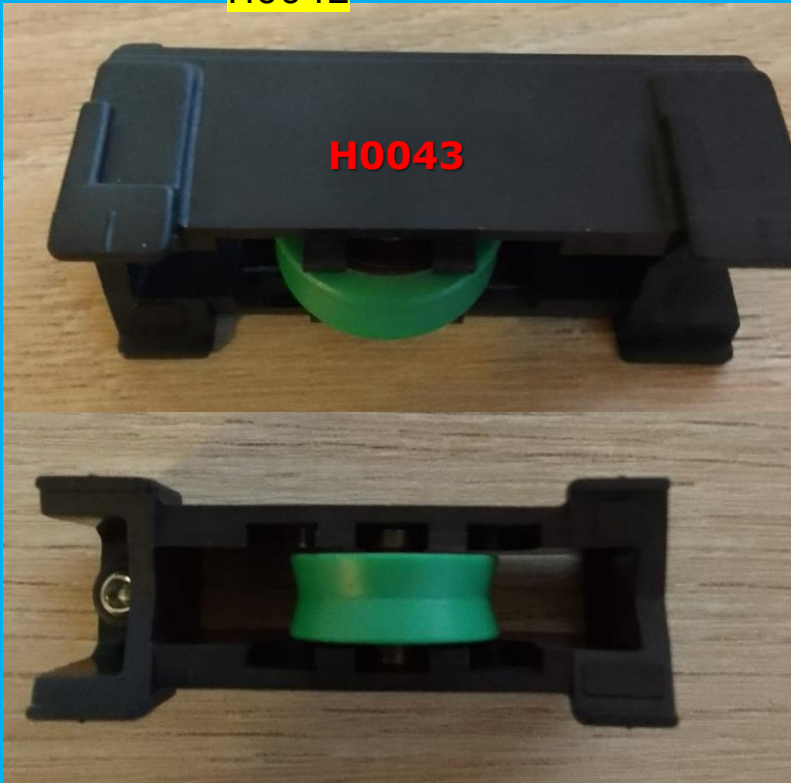
✓SGR3930

✓DGR3924



AC071

✓ H0042



AC072

✓ H584

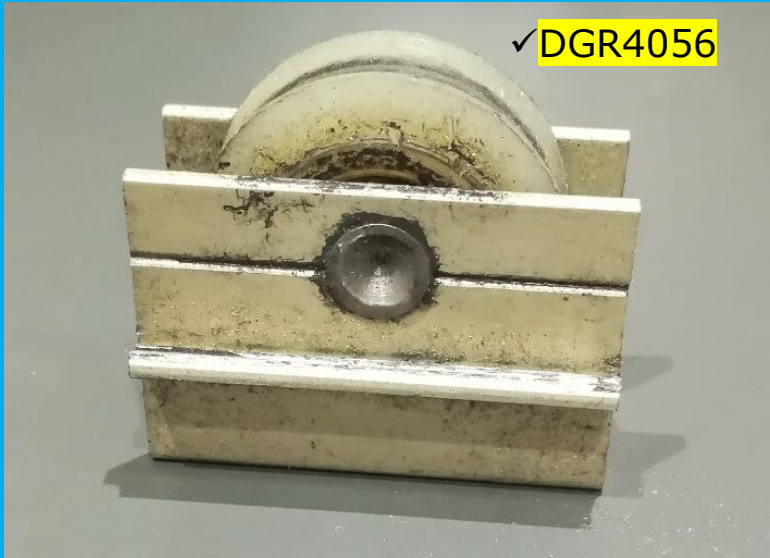


AC073



✓DGR3916 o  SGR03122

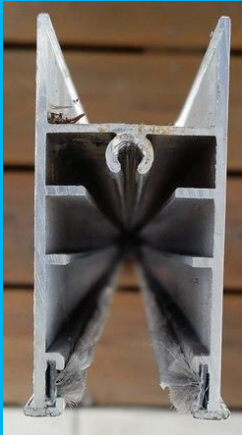
AC074



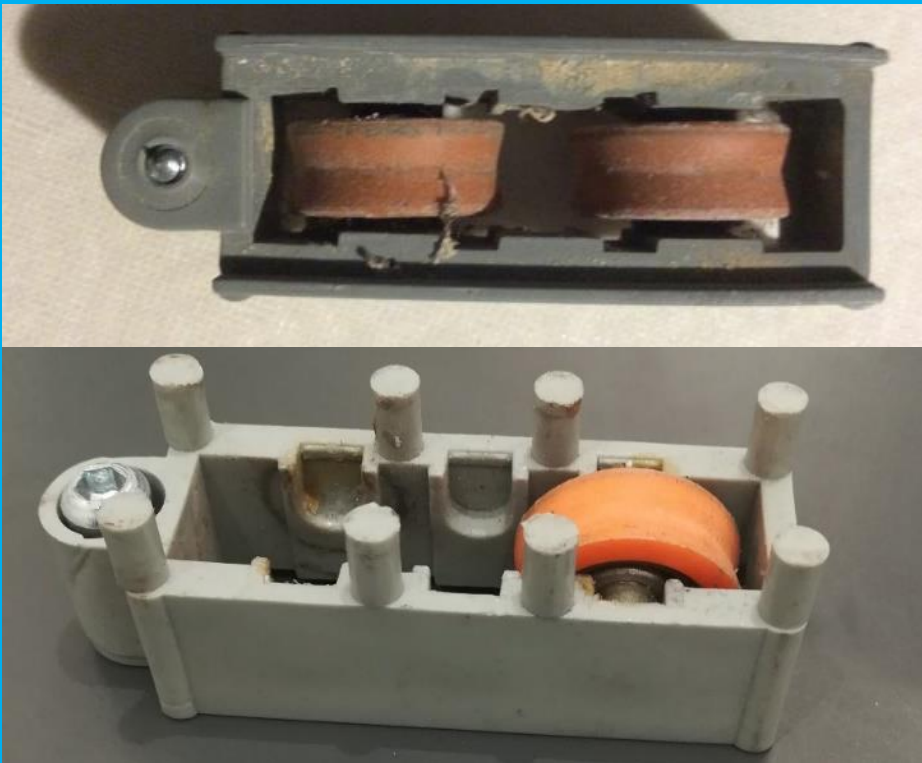
AC075



✓DGR3773



AC076



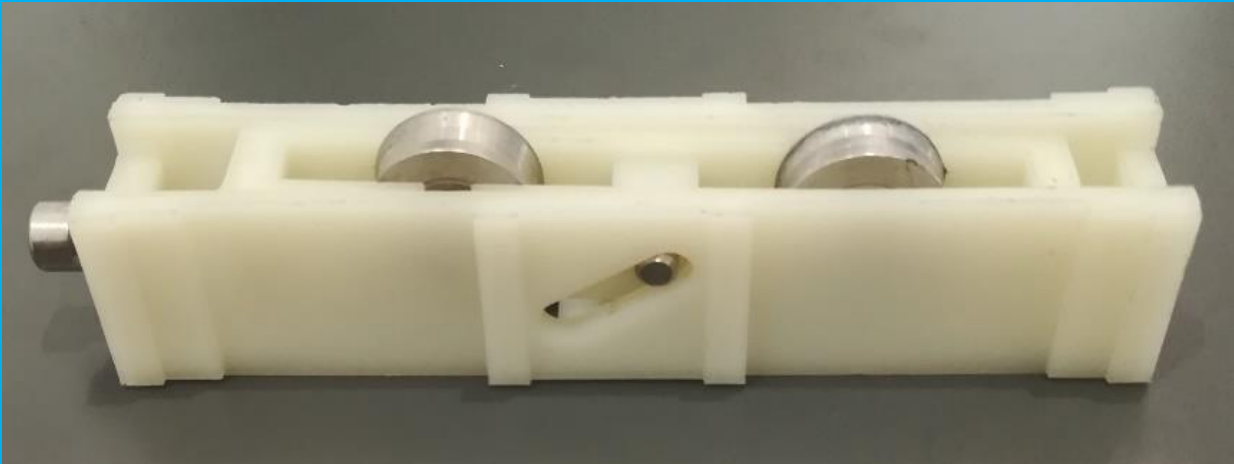
✓DGR3773

AC077



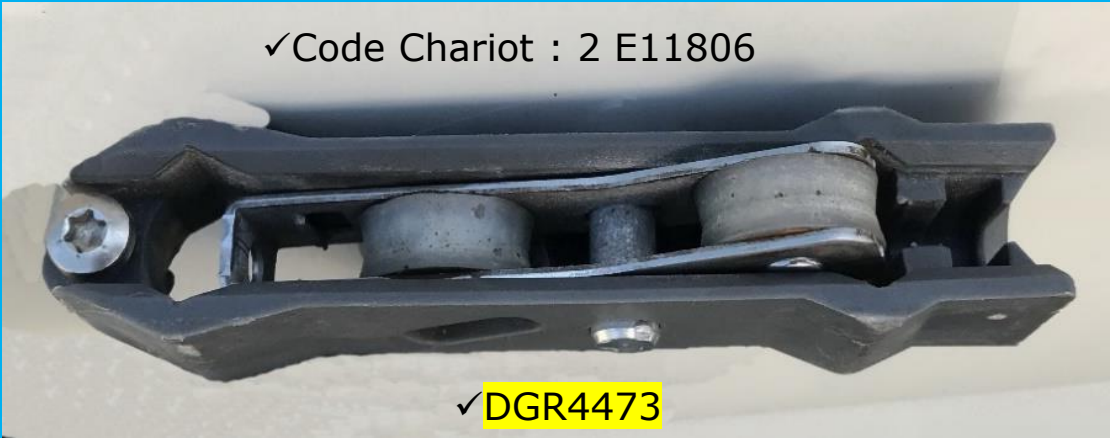
AC078

✓DGR4218/130°



AC079

✓Code Chariot : 2 E11806



✓DGR4473



AC080



Code Chariot :

CT-475

✓DGR4044



AC081



✓H584

AC082

✓DGR3652



AC083



✓DGR3924

AC084

✓DGR4585

✓SGR4590



Chariot: 3844A

Cage: 3734B

AC085

✓ DGR3924

✓ SGR3954



AC086

✓ DGR4008/PLAT



AC087

✓DGR3871 RETAILLER LARGEUR À 22 mm



✓DGR3811

AC088

✓SGR4067 + DÉCOUPE TRAVERSE
GALETS PLAT



✓DGR1341 Possible

AC089

✓ DGR4441

✓ Modif. ALCAN

Code sur chariot : 88A01
88A04



AC090

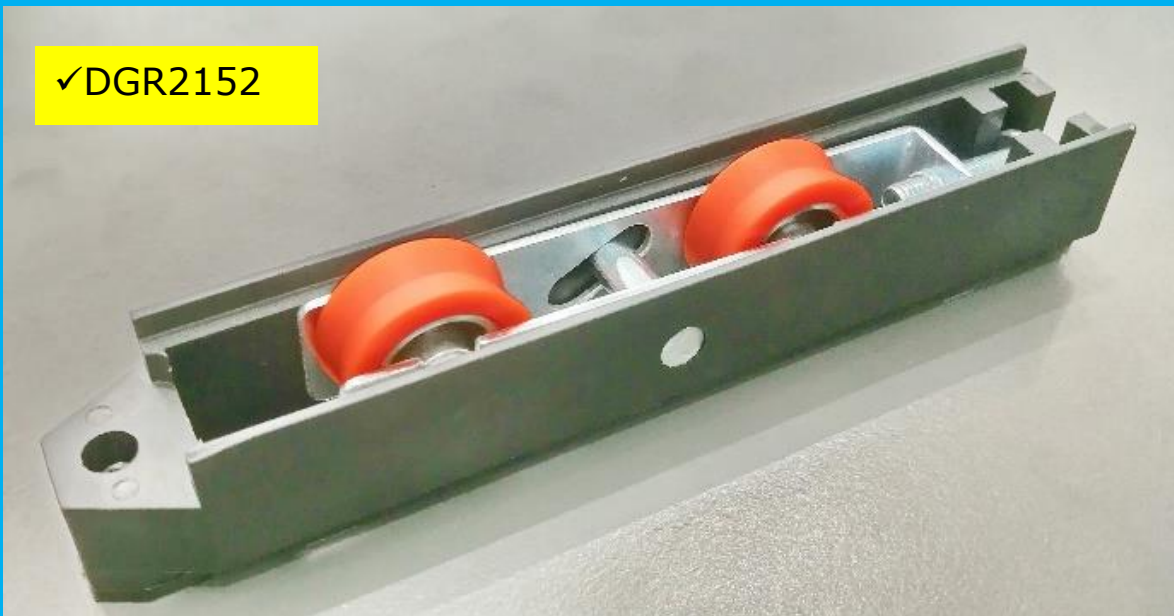


✓ DGR3360-NEWS avec différents galets.

✓ DR037730

AC091

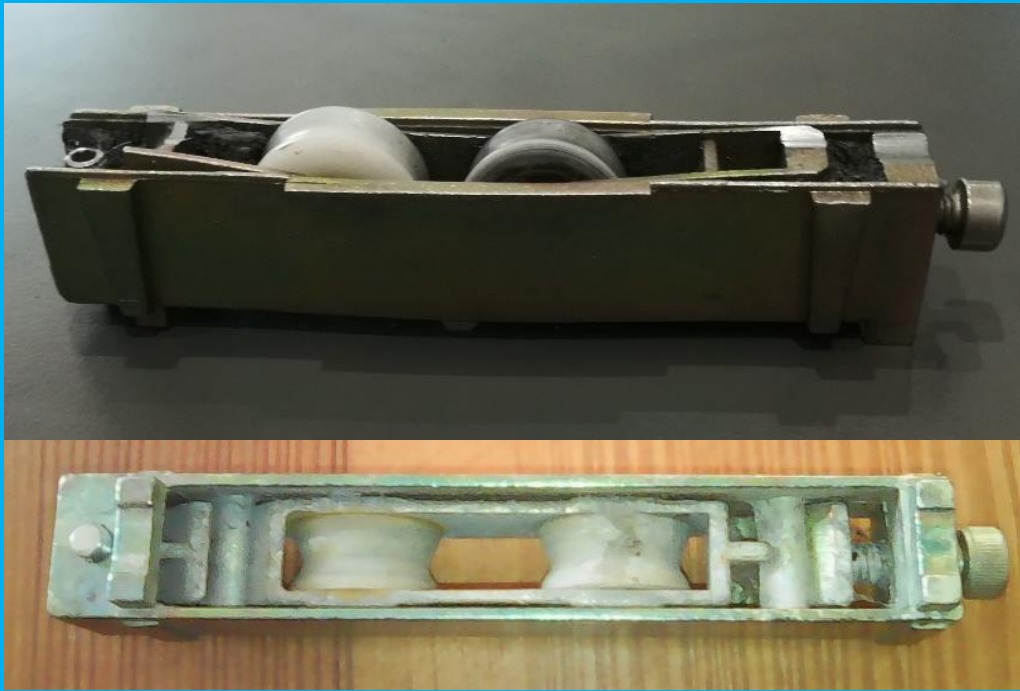
✓DGR2152



✓DGRGIESSE3/H584 Retailer Ailettes

AC092

✓DGR3843



AC093

✓ DGR3924



✓ SGR3954

AC094

✓ DGR4056



AC095



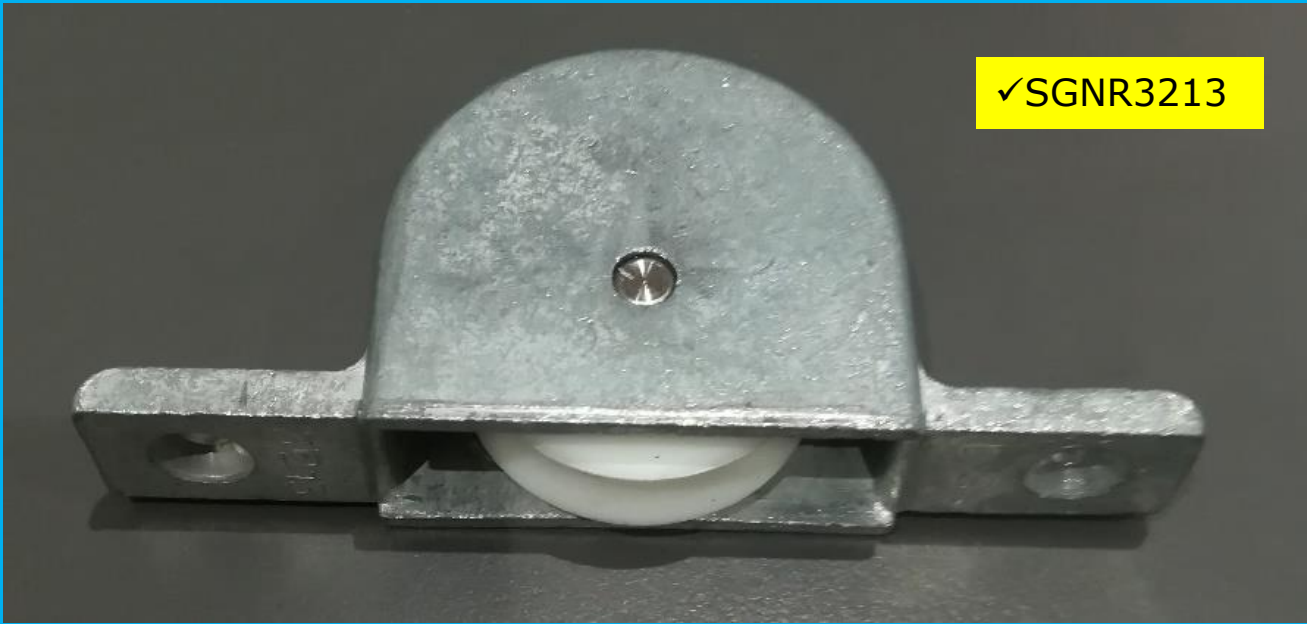
✓SGR4054

AC096



SGR3234083/R3

AC097



✓SGNR3213

AC098



✓DGR3871



AC099

✓DGR4012

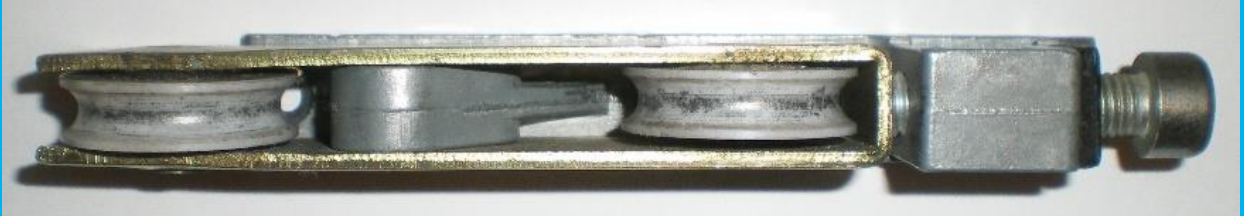


AC100

✓DGR3811



AC101



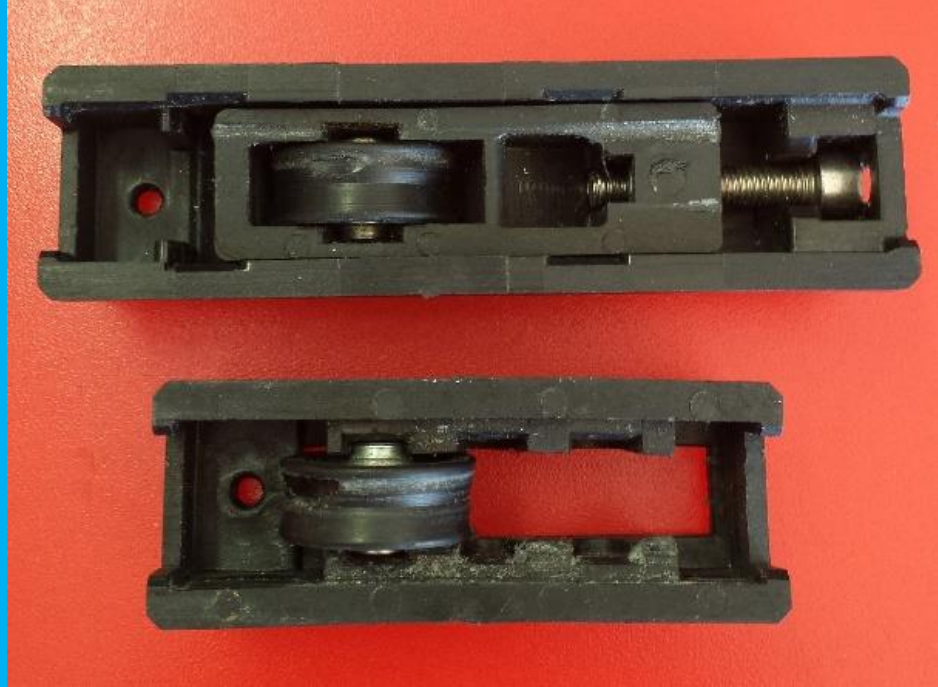
- ✓DGR2111
- ✓DGR2112
- ✓DGR2114
- ✓SGR323482
- ✓SGR323483
- ✓SGR323408

AC102

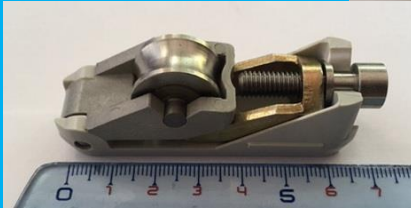


AC103

✓DGR4473



AC104



✓SGR3809 + Retailer la traverse

AC105



AC106



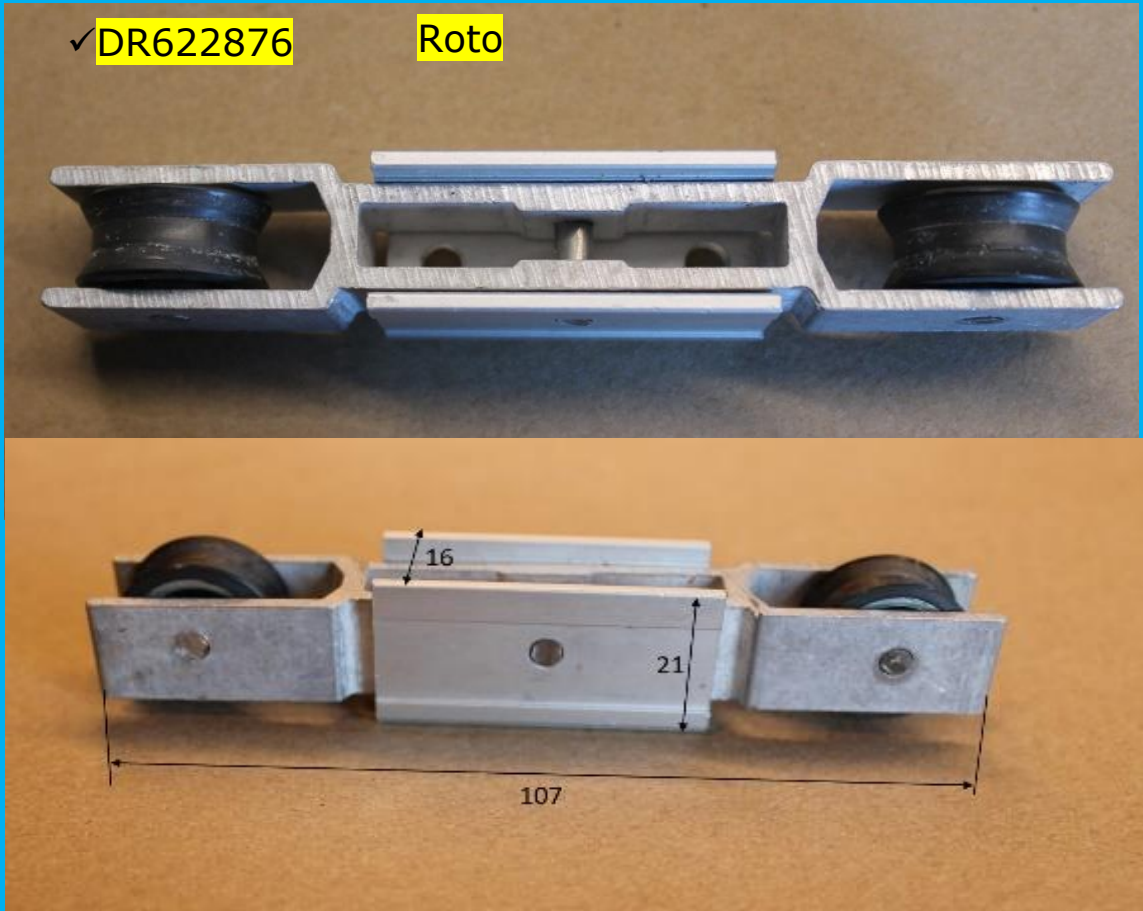
✓DGR3916

Retailer large le passage Alvéovis
Où Galet 4009-DA +3742B-AXE

AC107

✓DR622876

Roto



AC108



✓DGR4069

✓622876 ROTO

✓GU *** **

AC109



✓DGR2136

✓ROTO

✓GU *** **

AC110

✓SGR3944



AC111



✓DGR3843

AC112



✓DGR622876

Roto



AC113

FERCO GU ORPHÉA G11389



Coulissant bois

AC114



✓ **DGR3982**

AC115

✓ DGR3924



AC116

✓ DGR3916



AC117



✓ DGR3975



AC118

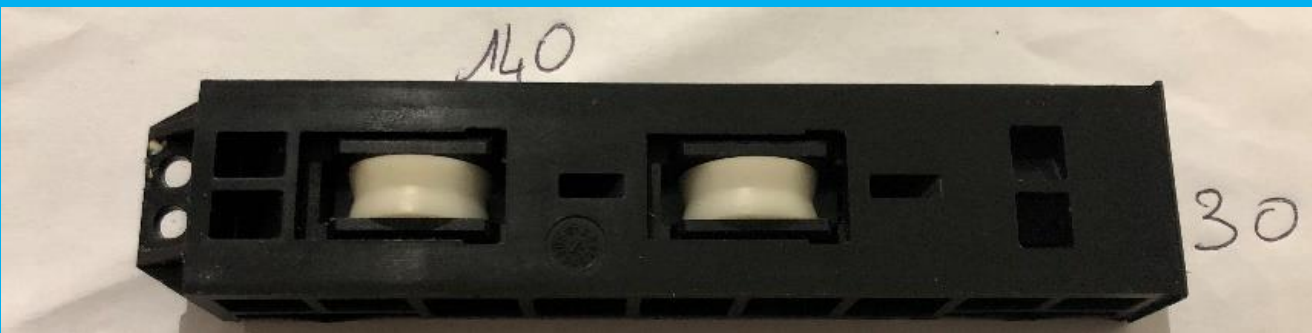
✓ DGR3991



AC119

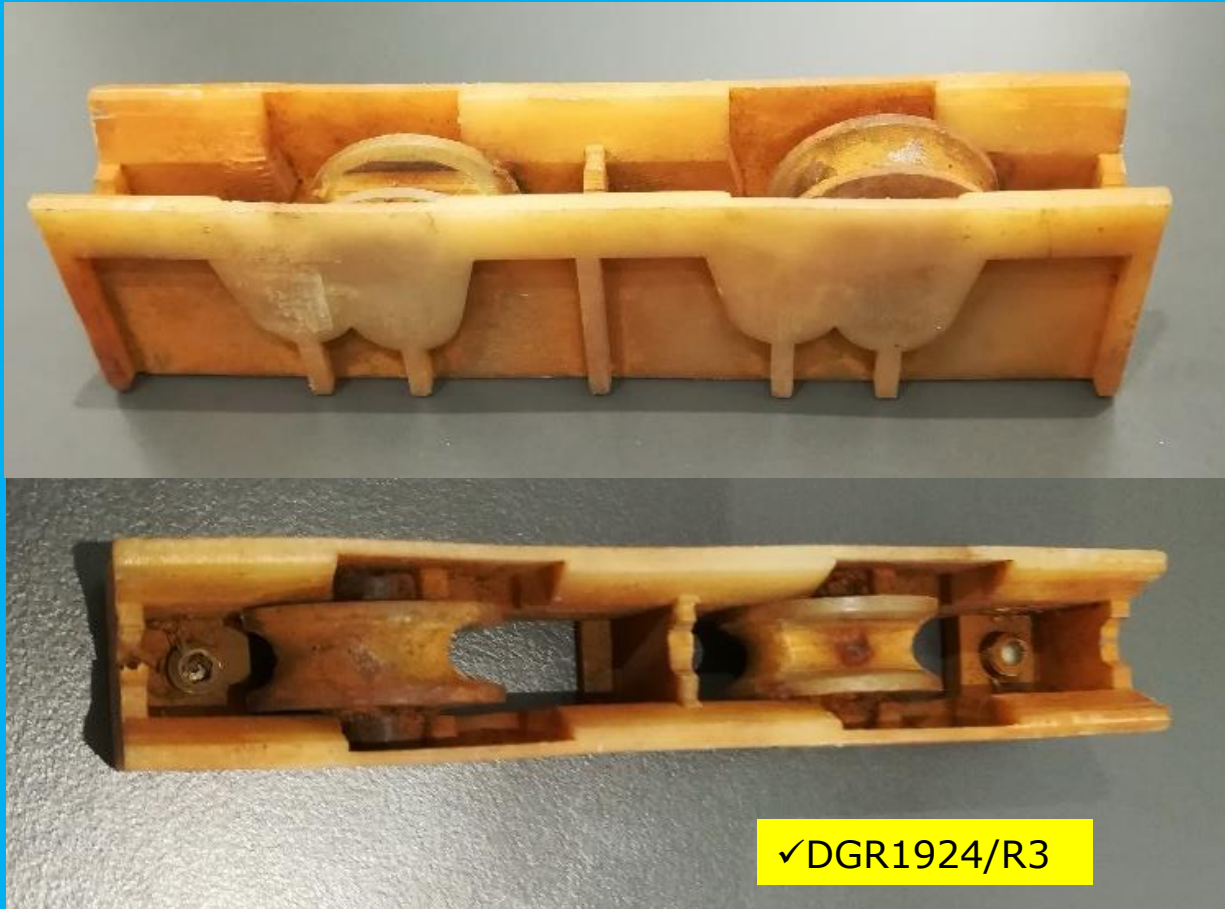


AC120



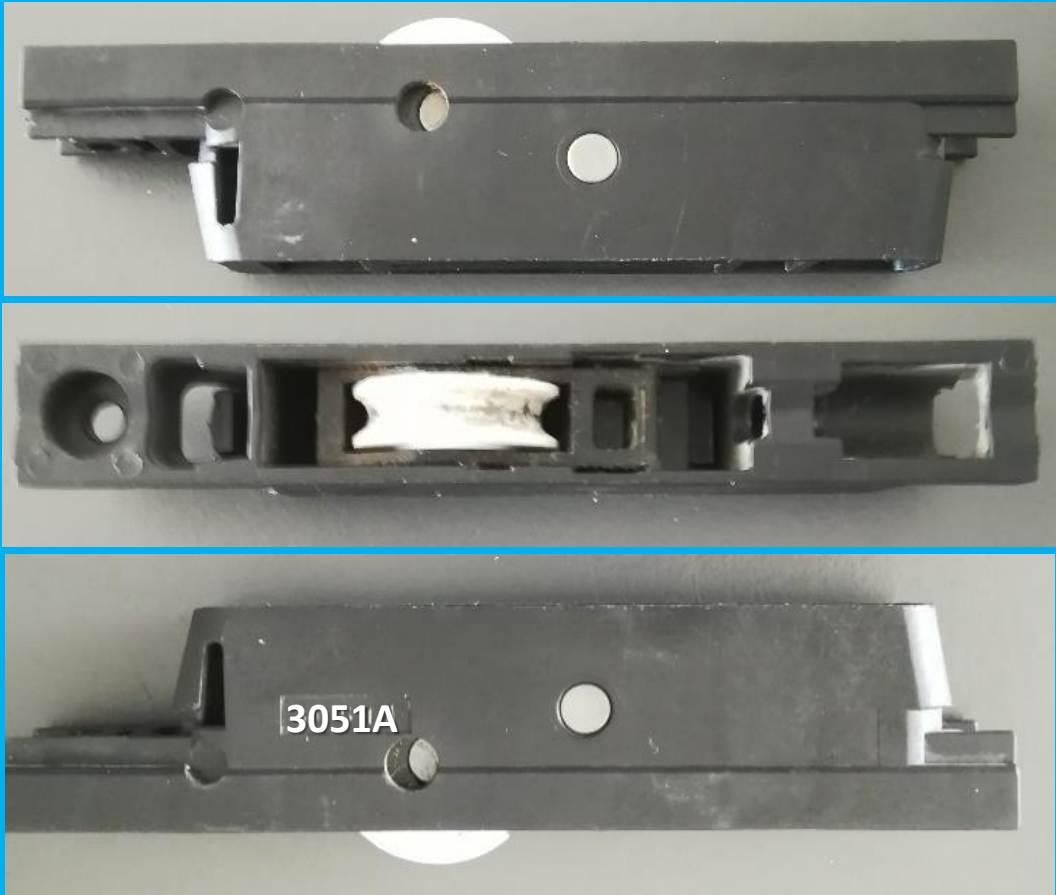
Avec Galets 55014DA

AC121



AC122

✓SGR4067



AC123

✓SGR3881/R3



« L » 18mm

« H » 21mm



AC124

✓DGR1924/150°



AC125

✓DGR3773/150°



✓ DGR3709AIDA INOX



AC126



✓DGR4572



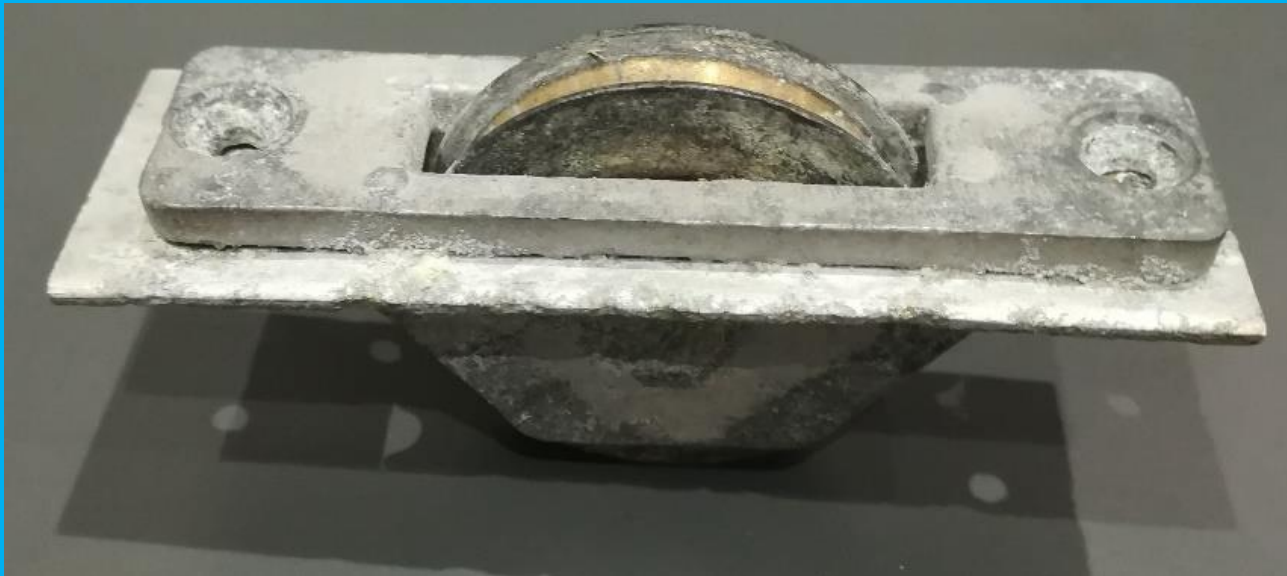
AC127

✓DGR3635/R3



AC128

✓DGR3993



AC129



AC130

✓G19797



AC131

✓DGR4008/150°

✓DGR3234



AC132

✓DGR3773



AC133

✓DR019240



AC134

✓DGR4431



AC135

✓SGNR3213



✓Code Chariot : MX96854

✓DGR3914



AC136

✓DGR3914



✓Code Chariot : MX96837



AC137

✓DGR3914 ✓DGR1368



AC138

✓DGR3635 (chariot) ✓DGR3614/R3



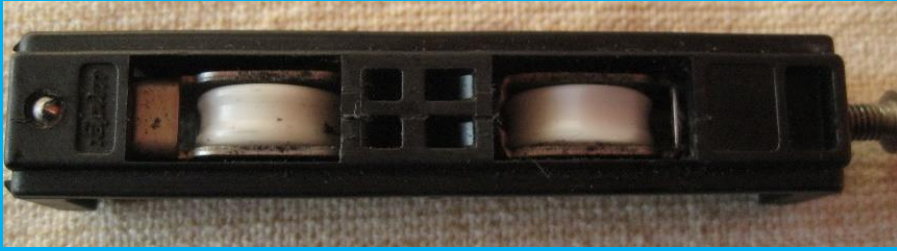
« L » 22,3mm

« H » 27,5mm



AC139

FAPIM code : chariot QAAP/cage GFAA



✓ DGR4513G130

✓ ou avec galets DR045210

AC140

✓ SGR4010



AC141

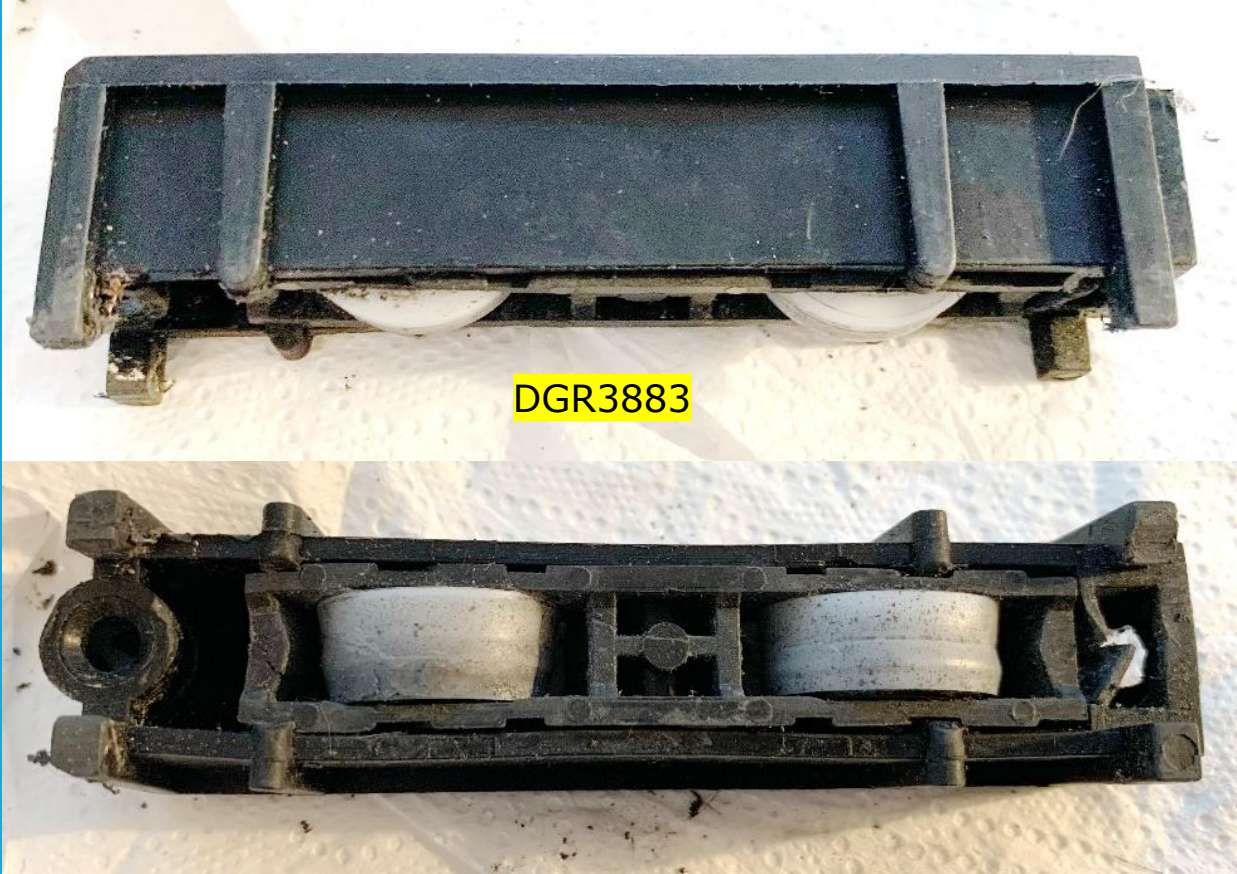


CG011

DGR4441



AC142



DGR3883

AC143



AC144



AC145

✓SGR100/150°



K-LINE

KAWNEER 8001636 (SGR)
R3



AC146

✓DGR3765/130°

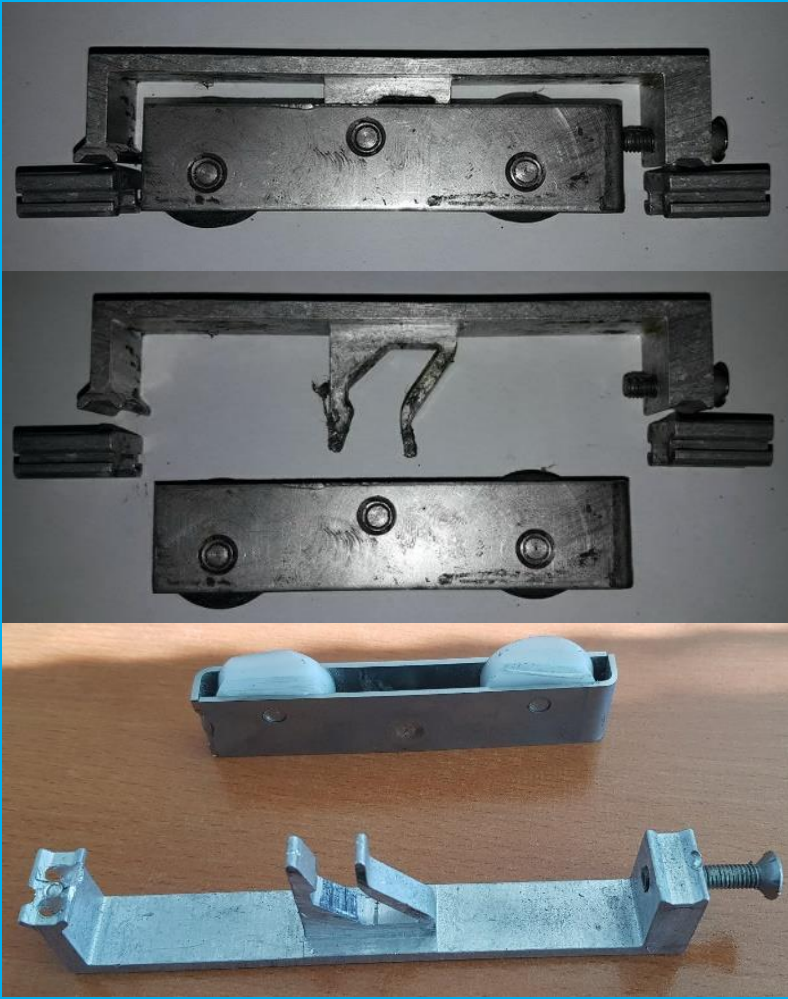


« L »23mm

« H »28mm

AC147

✓ DGR4008



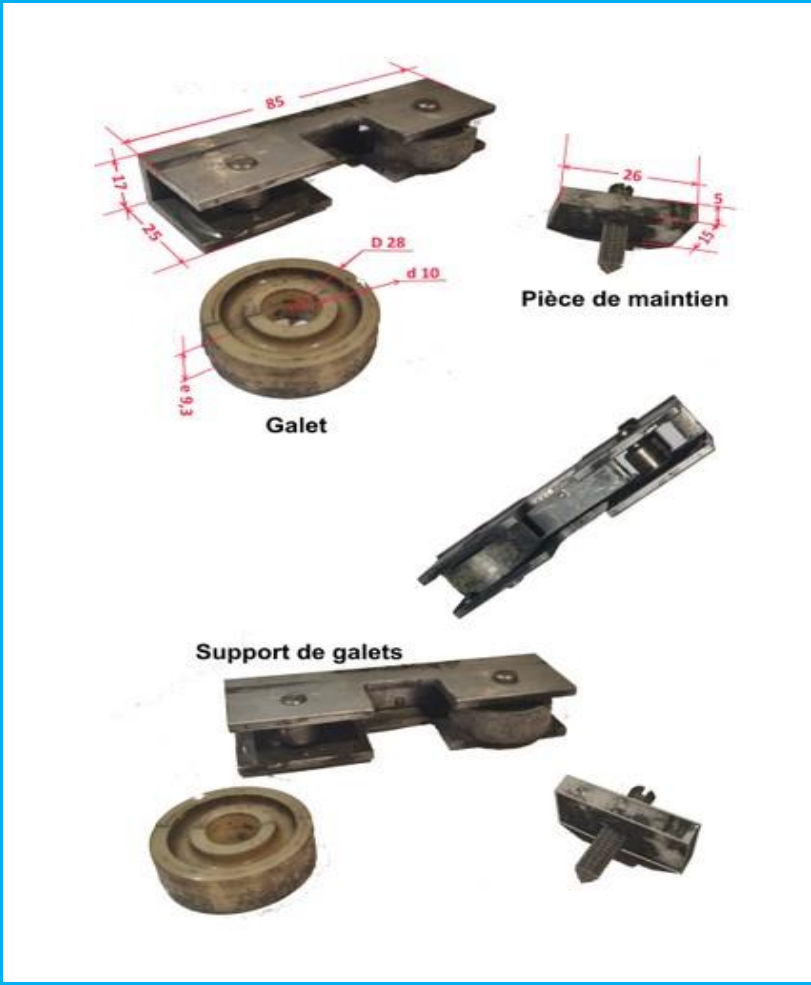
AC148

✓ DGR4441

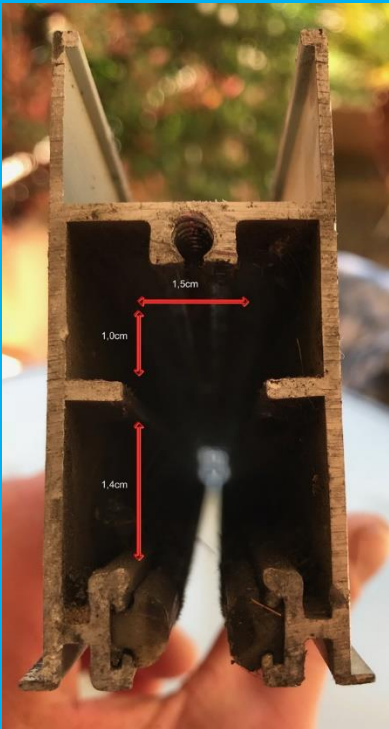


AC149

✓ DGR4069/PLAT



AC150



✓ DGR4056



AC151



AC152



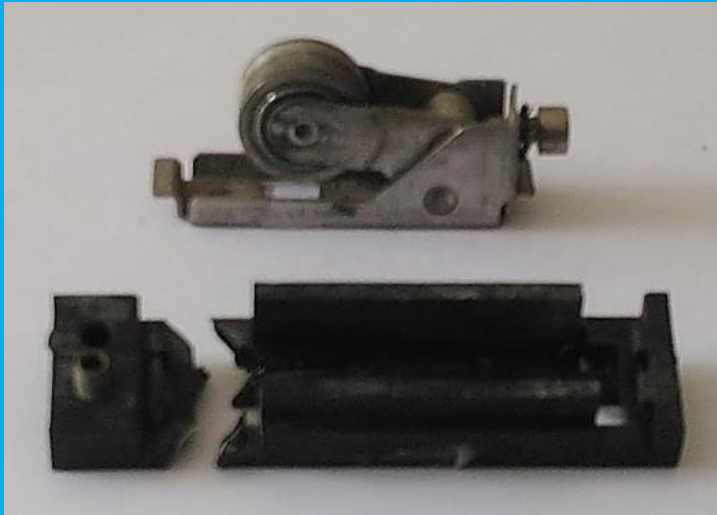
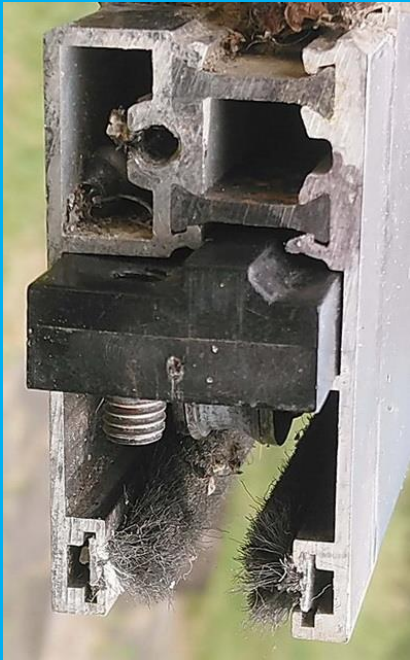
✓ DGR4250



AC153

✓SGR3809

✓DGR3811

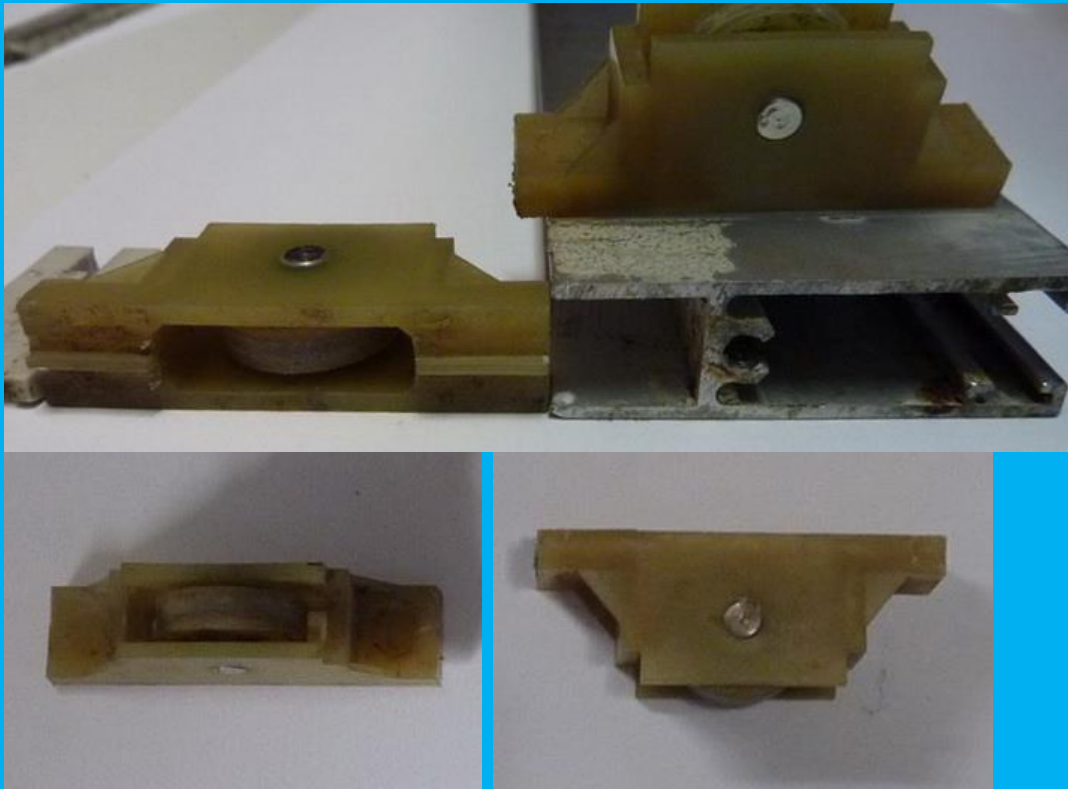


AC154

✓DGR4441/150°



AC155



✓CD3976/PLAT

AC156

✓DGR3843/R3



AC157

✓ DGR3843 en 22,3 de haut



✓ DGR2954 en 21mm de haut

AC158



✓ DGR3507

AC159



✓DGR4218/PLAT



AC160



✓DGR3507



AC161

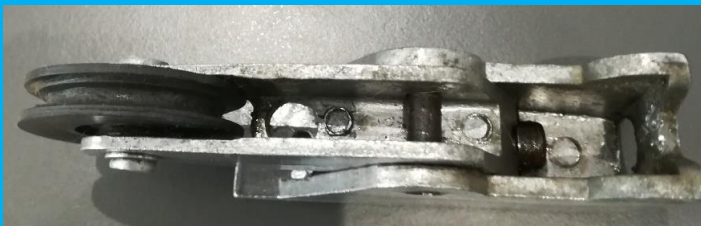


✓DGR3773
RETAILLER L'EMPLACEMENT



AC162

✓DGR4044



✓ARC04 + Cales de 5mm

AC163



✓SGR4216

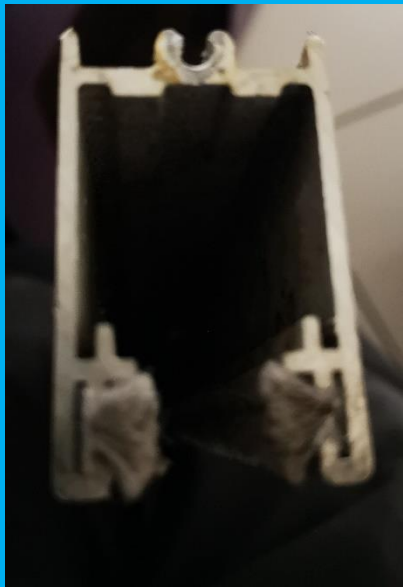
AC164



✓DGR3741



AC165



✓ DGR3635

AC166



Code corps : 3846A
Code cage : 3736B

✓ DR4583

AC167

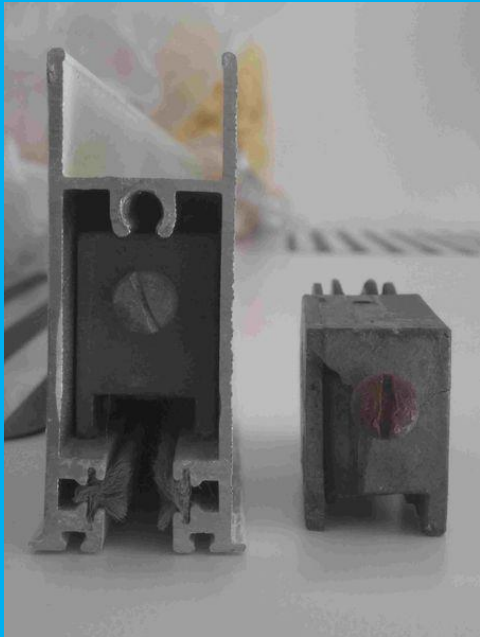


✓ DGR3843



AC168

✓ SGR3954



AC169



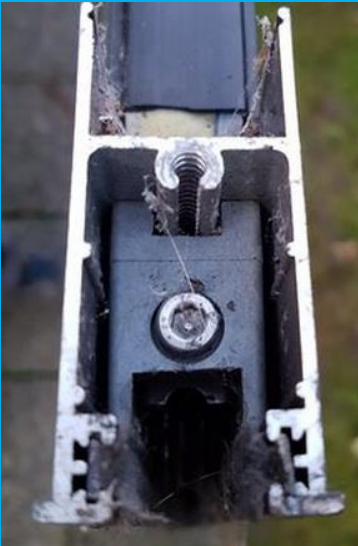
AC170

✓DGR3741



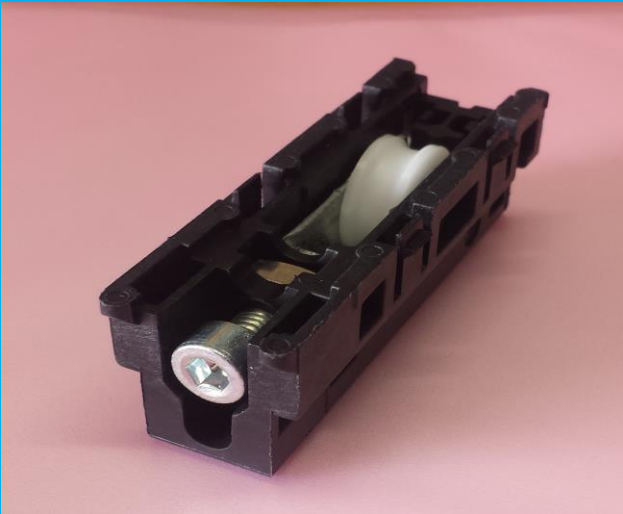
AC171

✓DGR3741



AC172

✓SGR1636



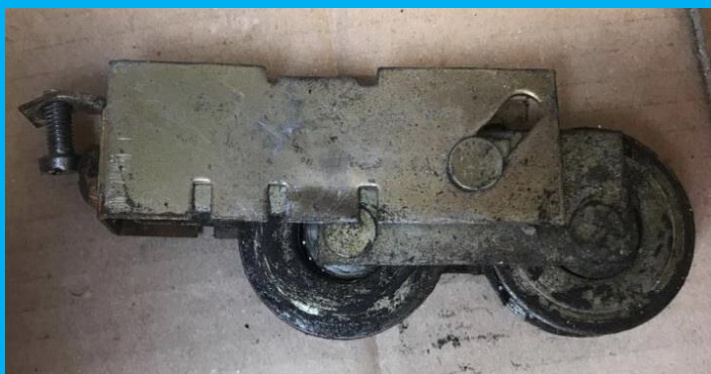
AC173



✓ DGR3765/R3/INOX



AC174



✓ DGR3924 POSSIBLE



AC175



AC176

✓DGR3914



AC177



AC178

✓ DGR622876



AC179

✓ 4684KDA



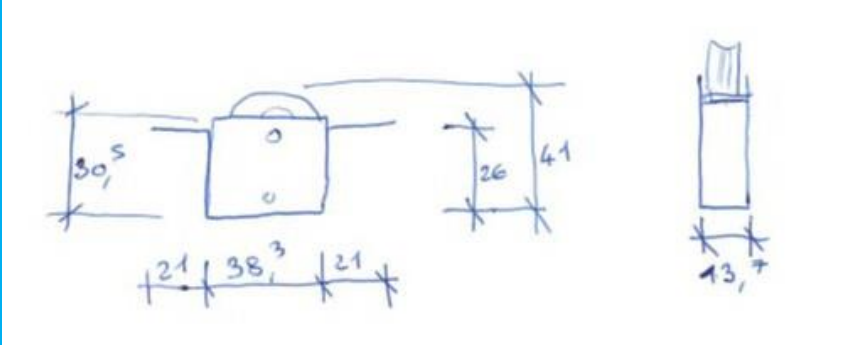
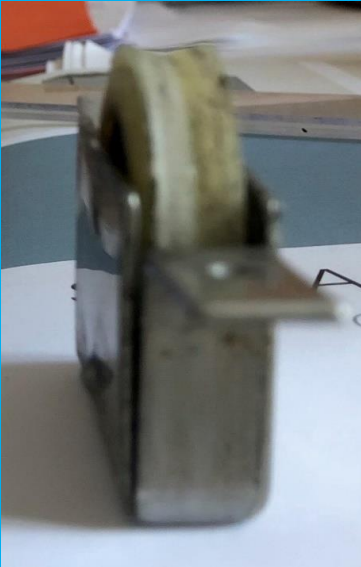
AC180

✓ SGNR3213



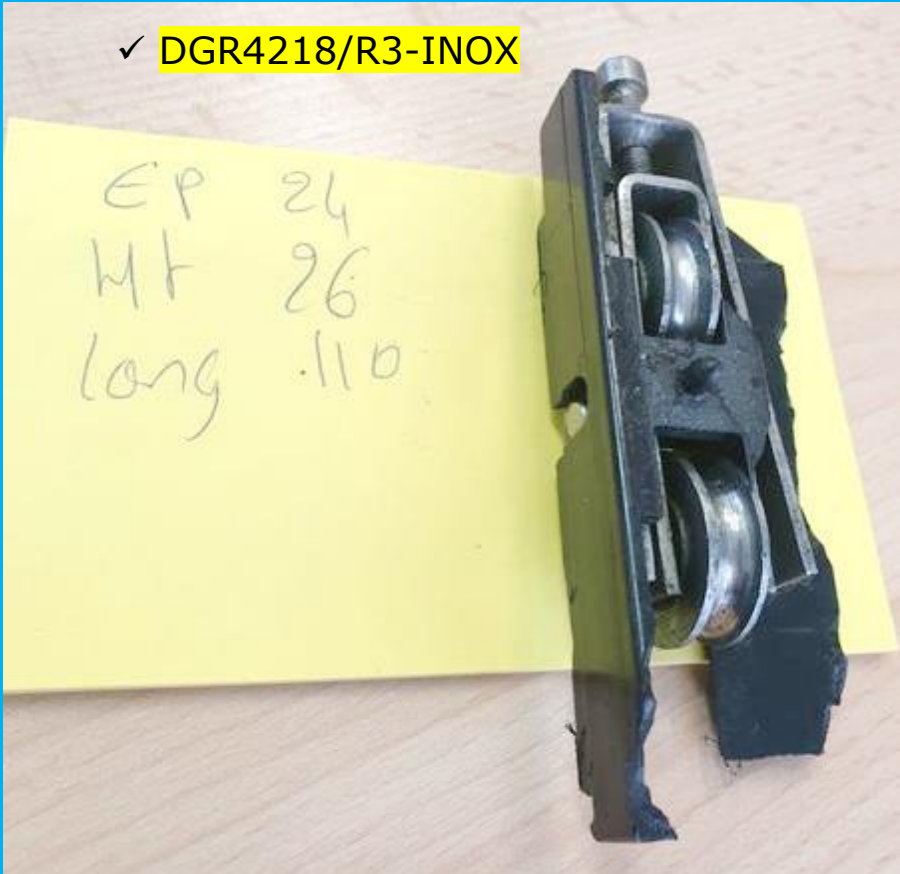
AC181

✓ SGNR3936/150°



AC182

✓ DGR4218/R3-INOX



AC183

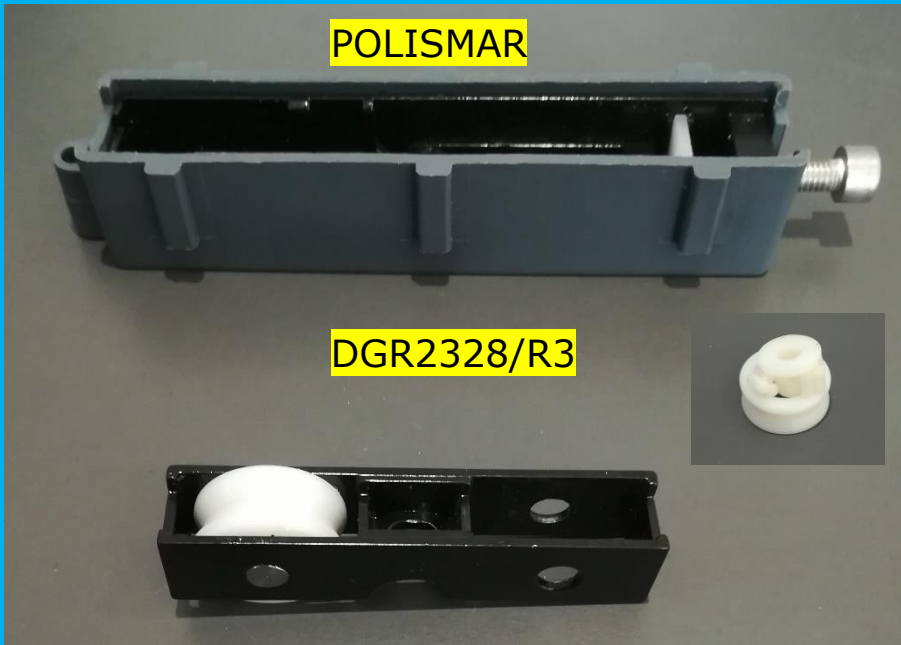
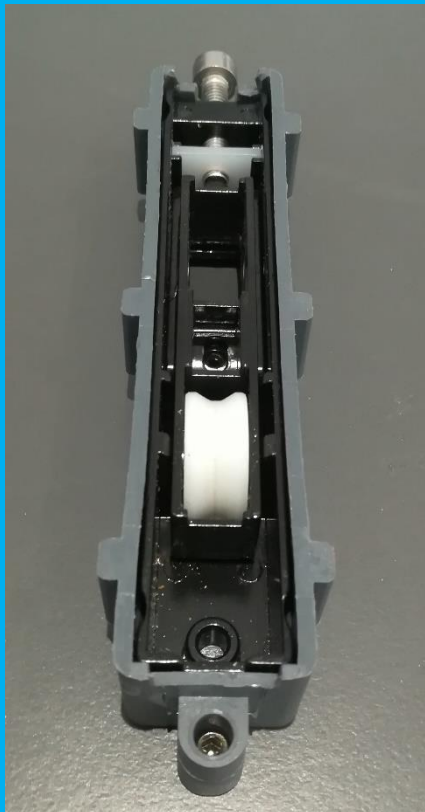
✓H031



AC184

POLISMAR

DGR2328/R3



AC185

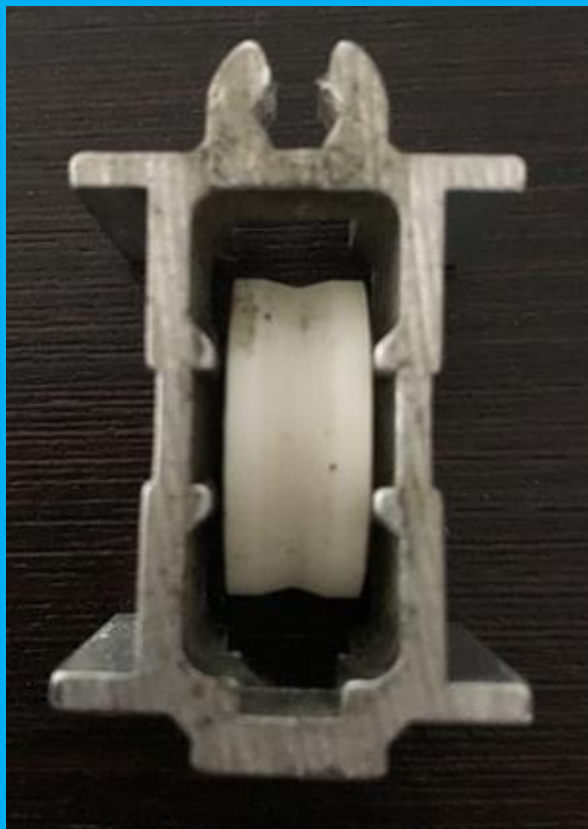


AC186



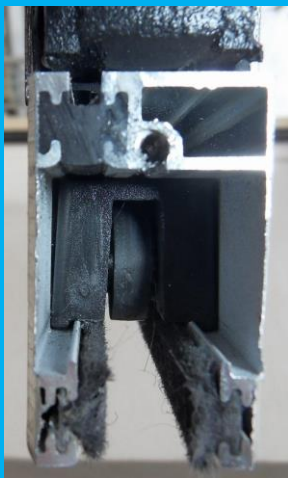
AC187

✓SGR3869



AC188

✓DGR3871/PLAT



AC189

✓DGR0100



AC190

✓DGR3635/130



22mm de Haut

AC191

✓DGR1785



AC192



✓CHANGEMENT
AVEC GALET VERT

AC193

✓DGR4431



AC194



✓DGR615951



AC195

✓ DGR4002



AC196

✓ DGR4250



AC197

✓ DGR297216



AC198

✓ SGNR3244



AC199



AC200



✓SGNR3936/150°

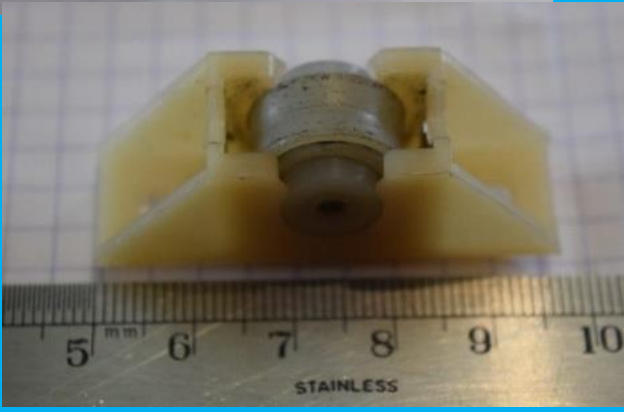


avec galets
4033DA



AC201

✓CDG3172



AC202 ✓DGR4002 à percer pour passage de la vis de réglage.



AC203



21 x 26

✓ **DGR3842/R3**



AC204



✓ **SGNR3936/R3**

AC205

✓SGR4067



✓Code Chariot : 219 272 01



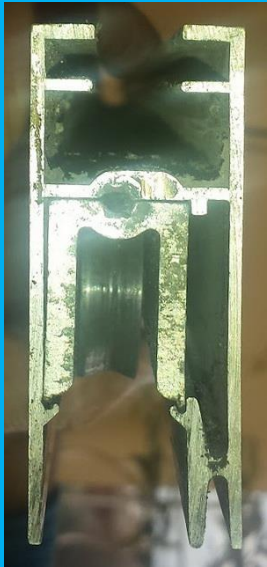
AC206

✓CDG3172

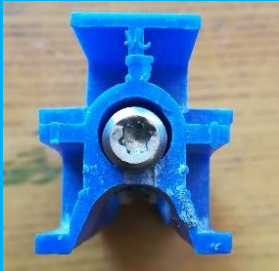


AC207

✓DGR3924

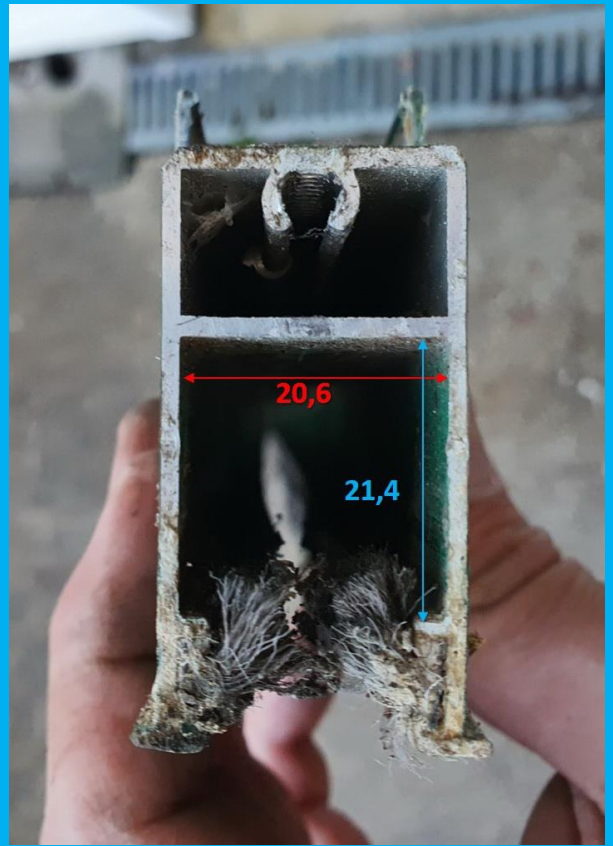


AC208



AC209

L : 20,6 H : 21,4

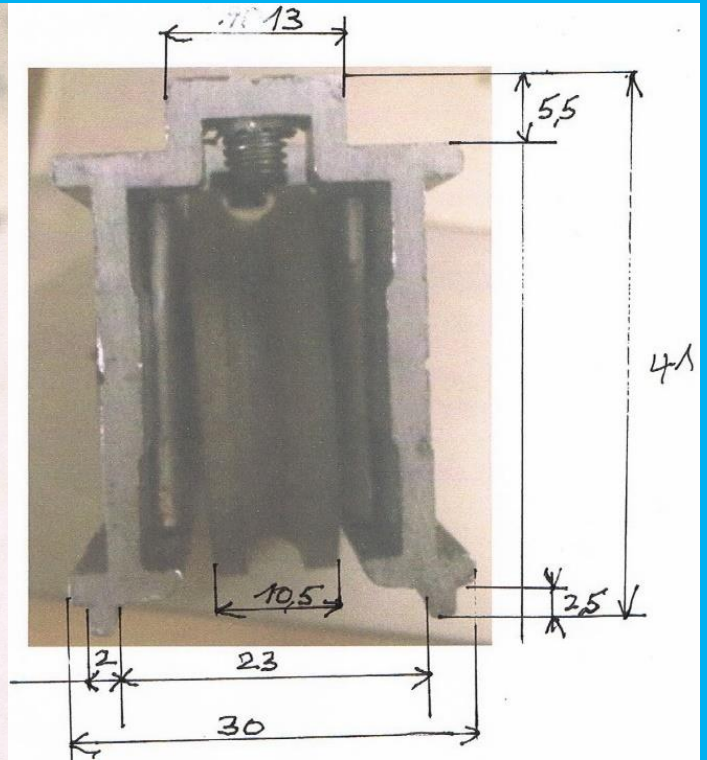
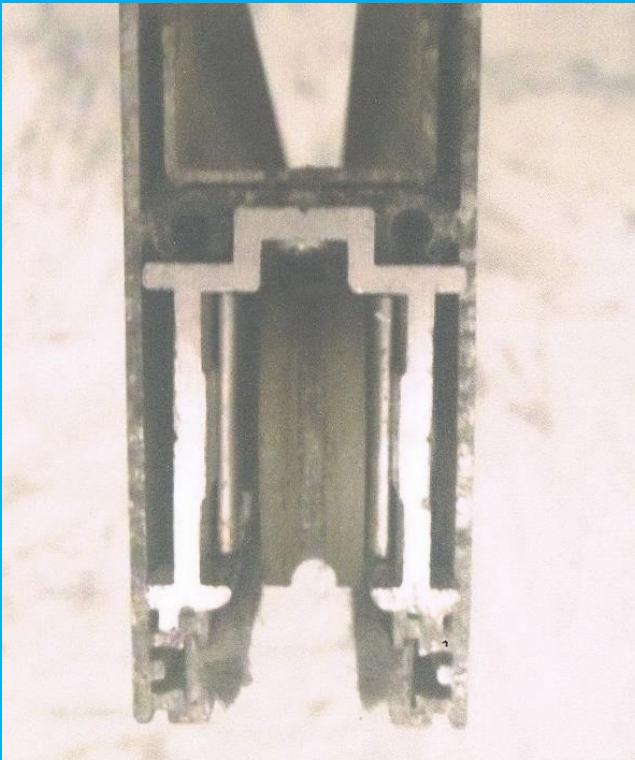


AC210

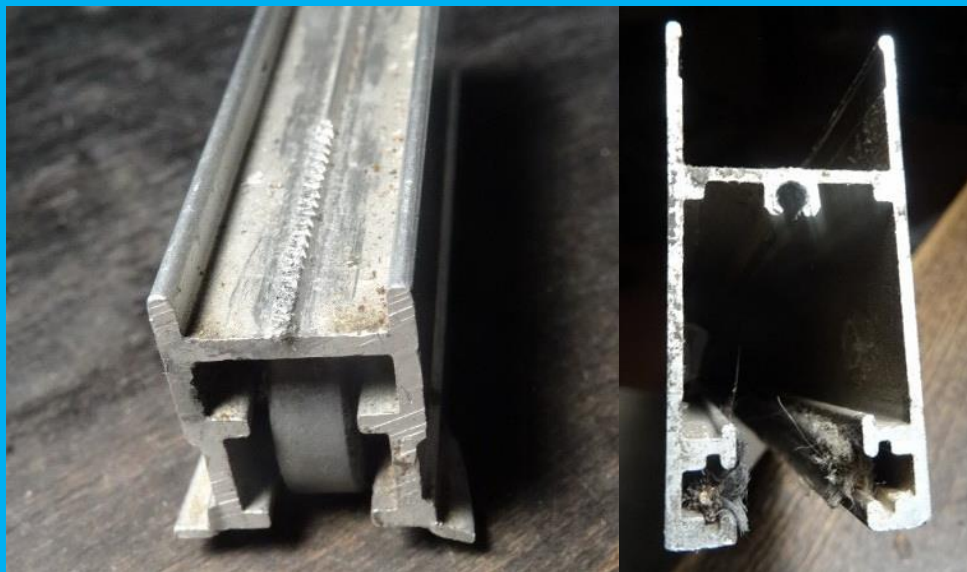


AC211

✓DGR4441



AC212



✓DGR4250/PLAT



AC213

✓Code Cage : Z0209

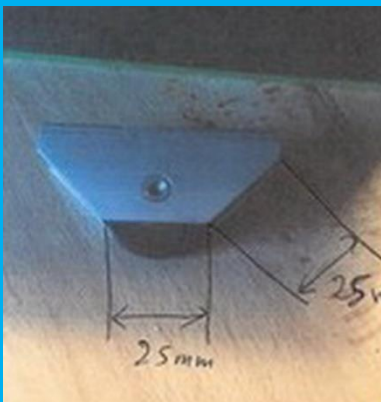


✓H584



AC214

✓SGR3234083



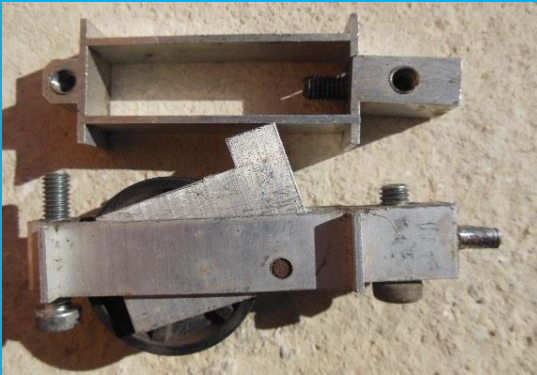
AC215

✓DGR2114

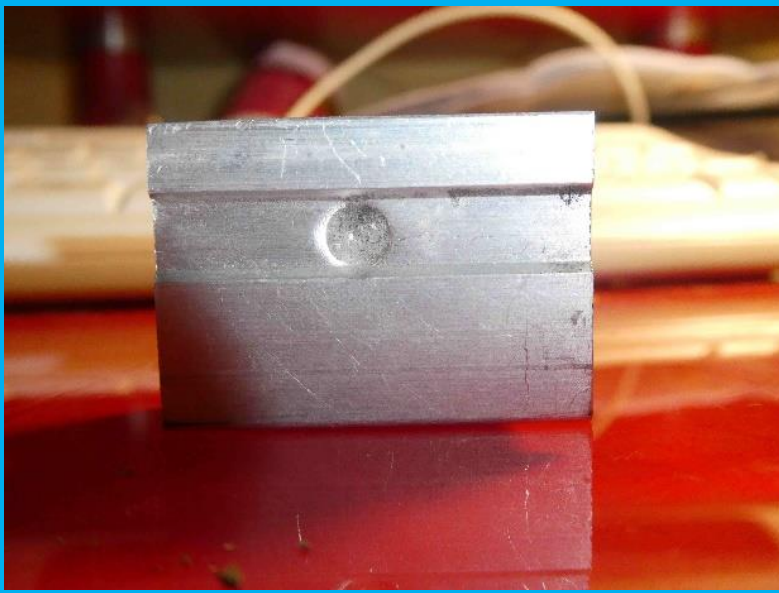


AC216

DGR1368/R3



AC217



✓DGR7450



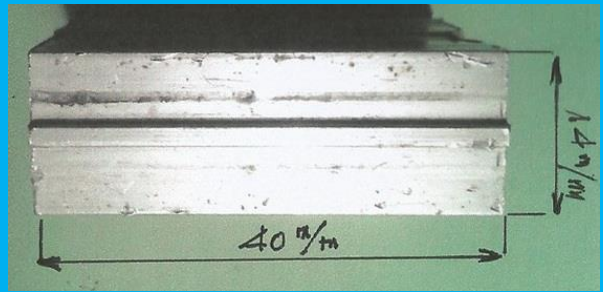
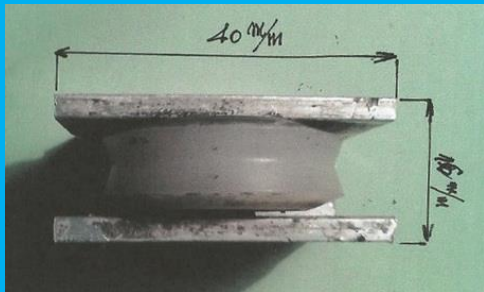
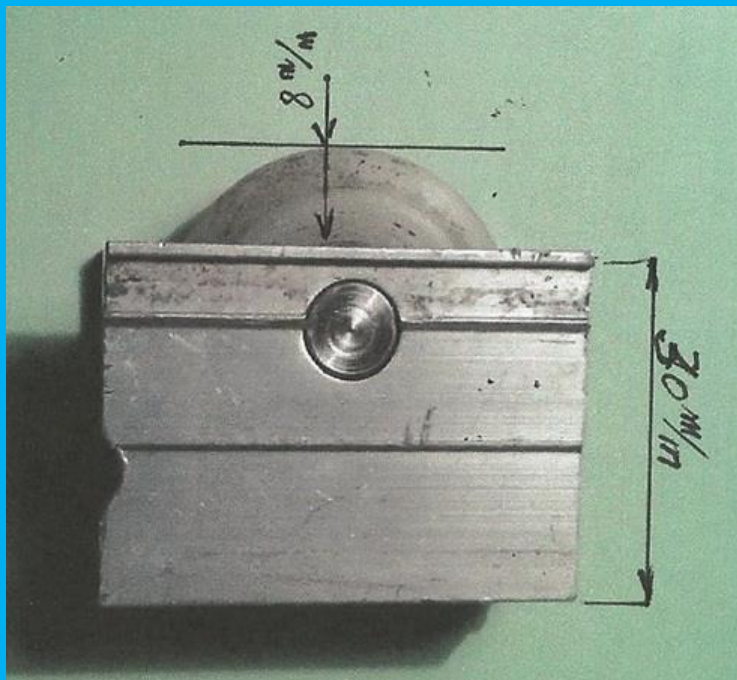
AC218

✓DGR3871/R3



AC219

✓SGR4054/150



AC220

✓DGR3914



+ CALE SUR LES COTÉS

AC221

✓DGR1724/130°

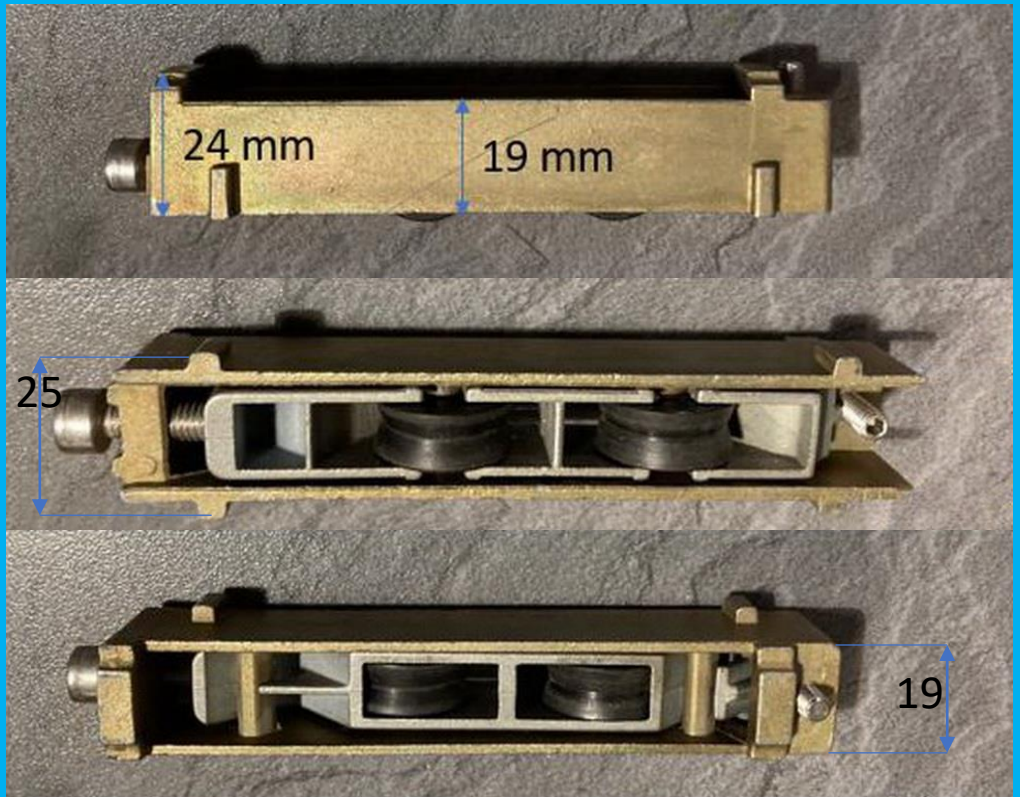
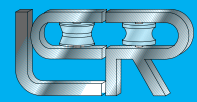


AC222

✓H045



AC223



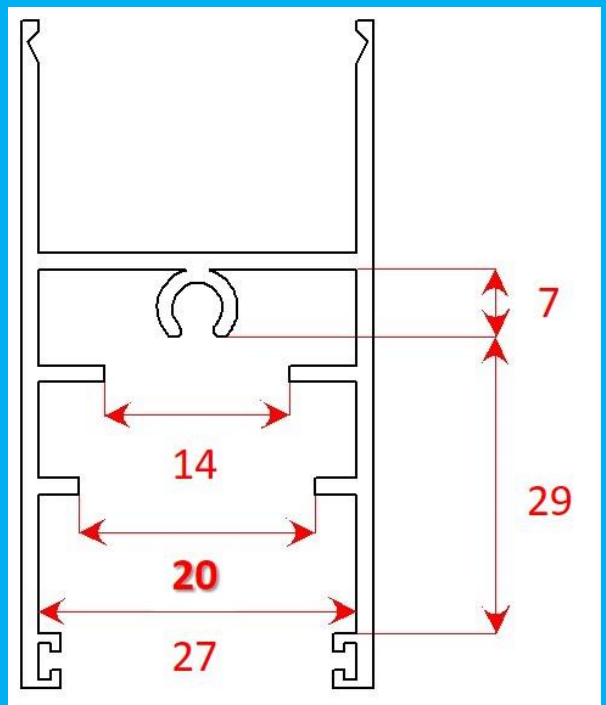
L : 25 H : 24

✓DGR4473

AC224

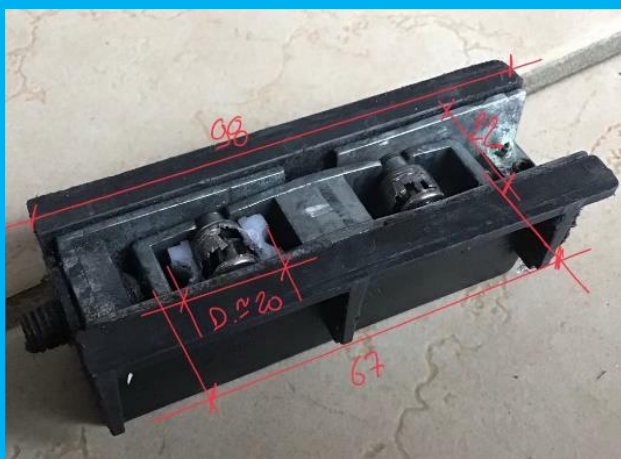
✓DGR4529

Entaille ailette en **20**



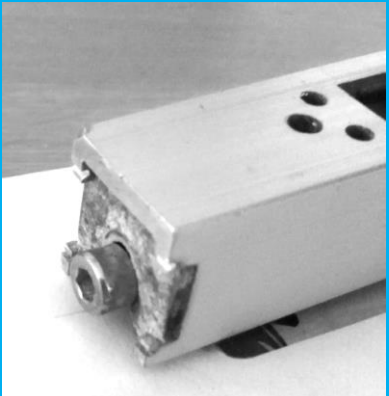
AC225

✓DGR4533



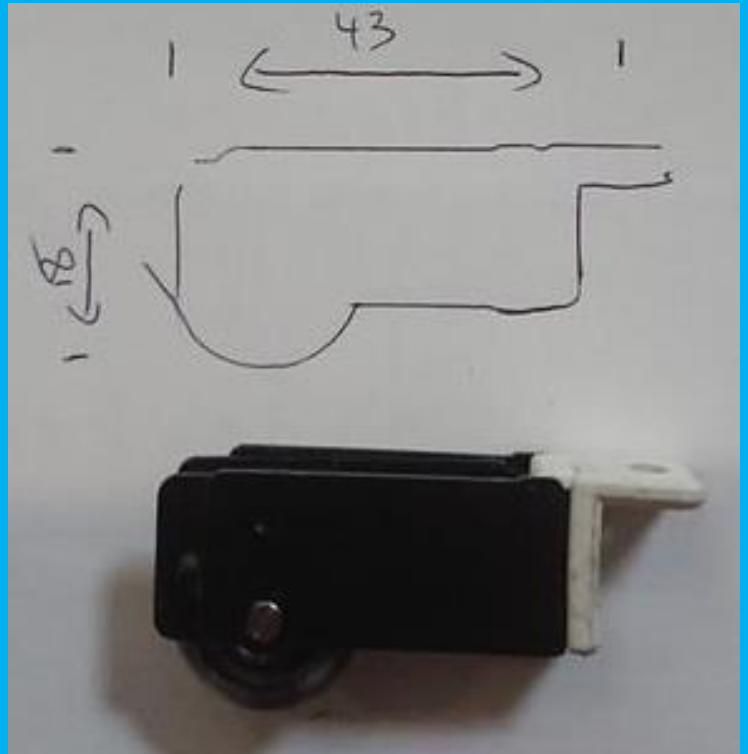
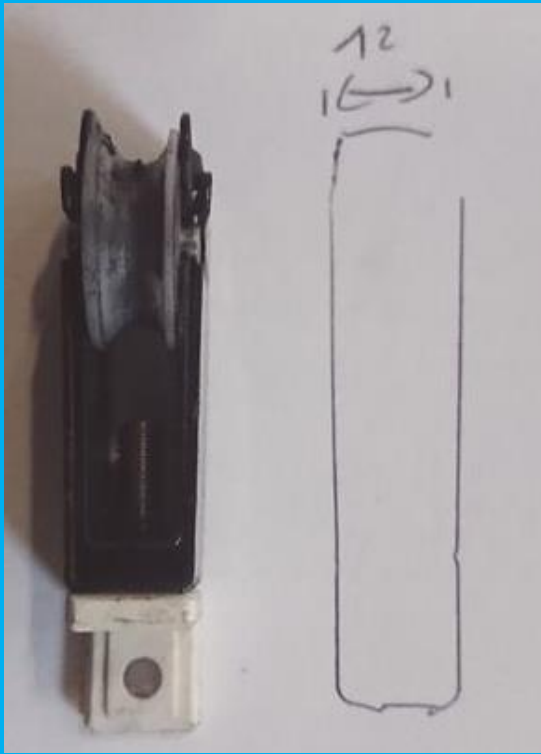
AC226

✓DGR3843



AC227

✓ROTO 312897



AC228

✓SGRB0437

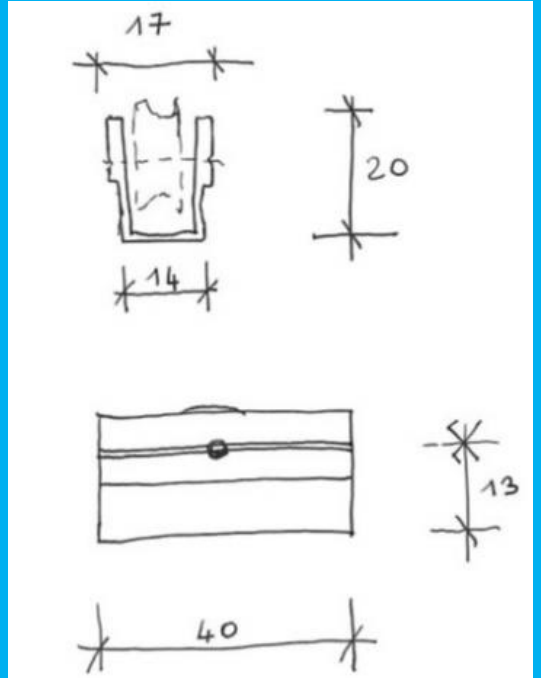
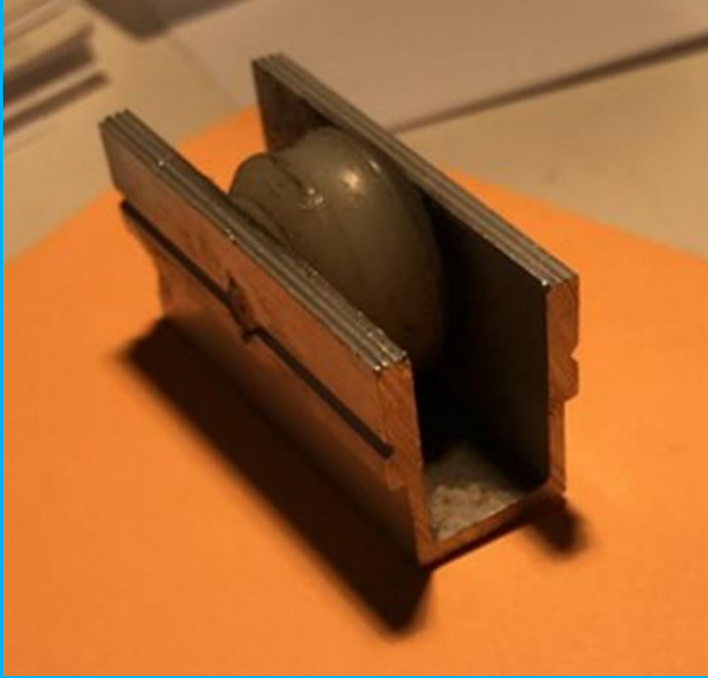


✓Code Chariot : B0438



AC229

✓DGR622876 ROTO



AC230

✓DGR1924/150°



AC231

✓DGR3701



✓Code Chariot : 4401A

✓Code Cage : 4400CG/150°/R3



AC232

✓Codes Chariot : SR-S03

SR002L

✓DGR4583



AC233

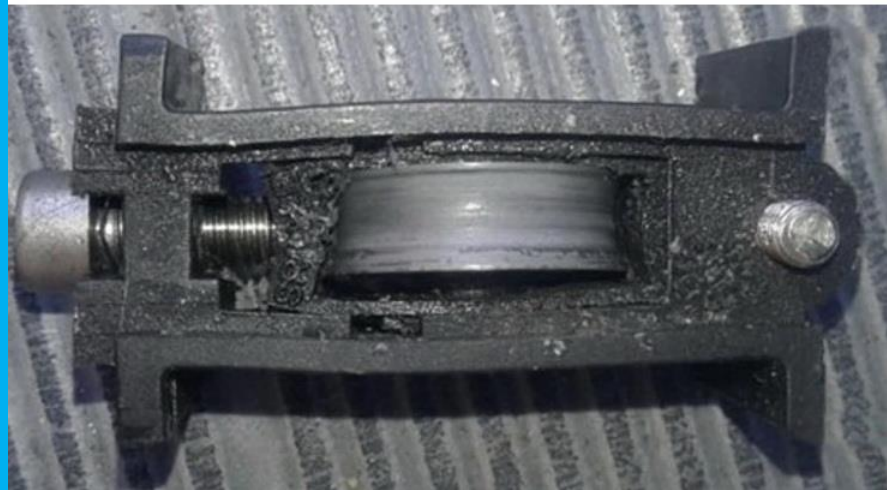


AC234



✓SGR323483
ou
NON REMPLACÉ

AC235



AC236

REEMPLACER
LA CAGE



AC237

✓DGR4250



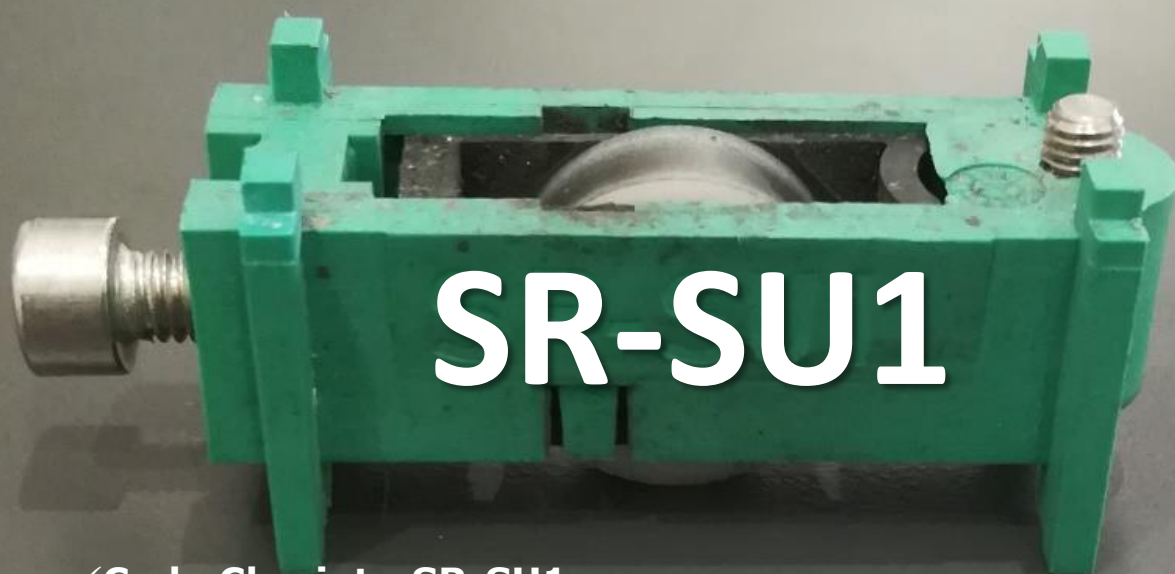
SR-SA1

- ✓Code Chariot : SR-SA1
- ✓Code Chariot : SF-SA1

AC238

DGR4431/50 à ajuster en hauteur

PASSAGE ALVÉOVIS



SR-SU1

- ✓Code Chariot : SR-SU1
- ✓Code Chariot : SR-VT1/150°

AC239

✓ **DGR4572**



AC240

✓ **DGR4572/R3/150°**



AC241

✓DGR3883-RETAIL+ Flap sur bord



AC242

✓DGR4510

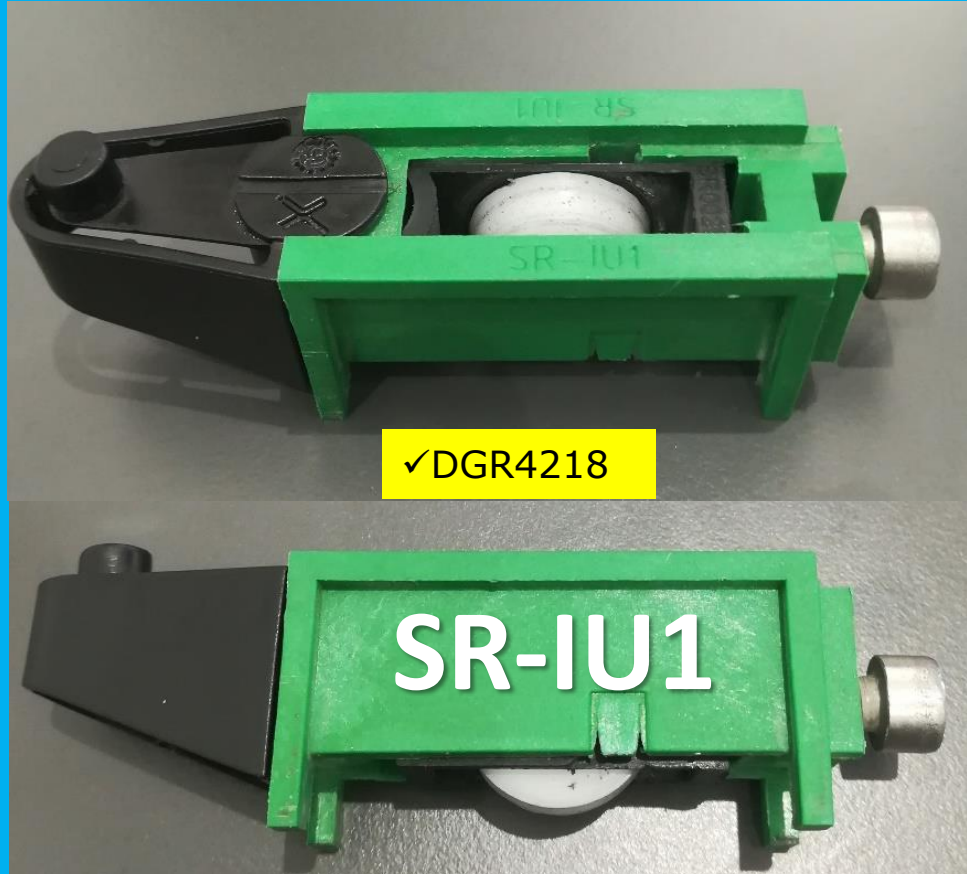
✓DGR4523



AC243



AC244



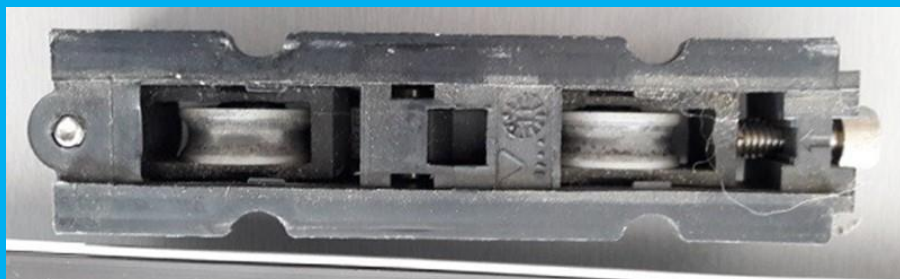
AC245

DGR4583/150°



AC246

✓DGR3773



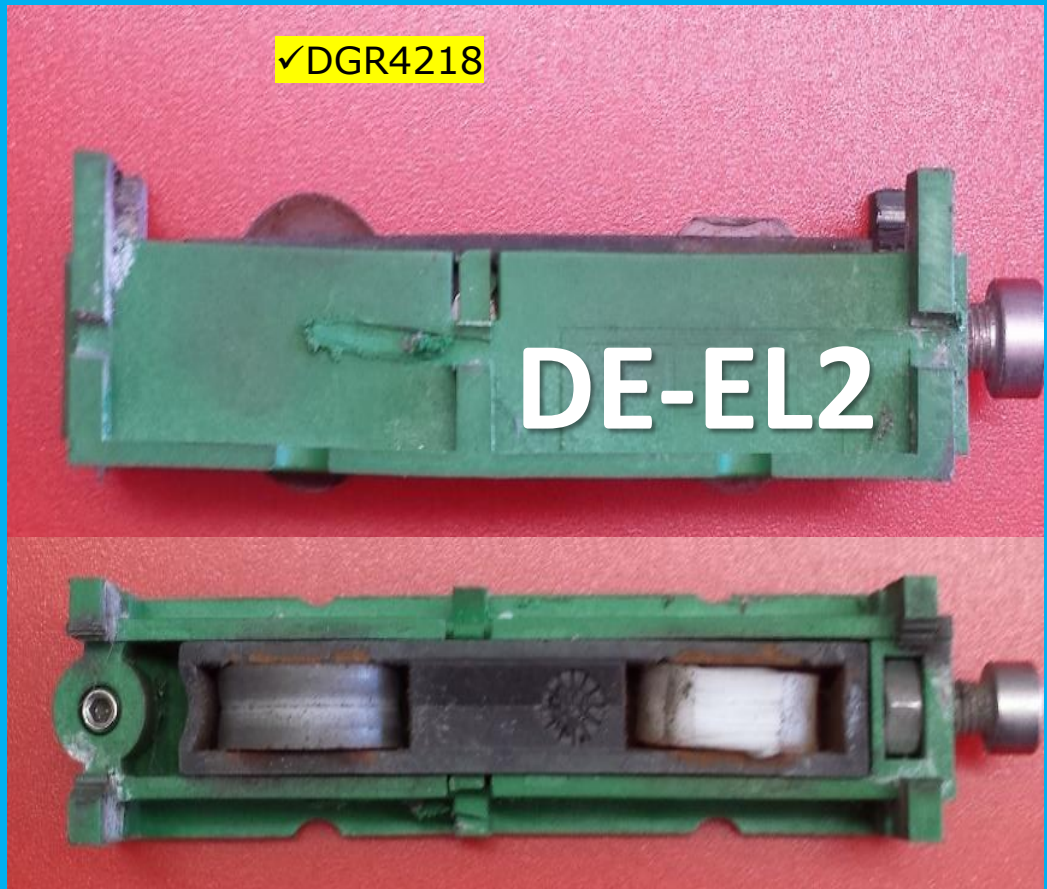
AC247

✓DGR4547 POSSIBLE



AC248

✓DGR4218



AC249

DGR3883-RETAIL

DGR4218

DISQUER LE CUL



AC250

DGR3883-RETAIL

DGR4218

DISQUER LE CUL

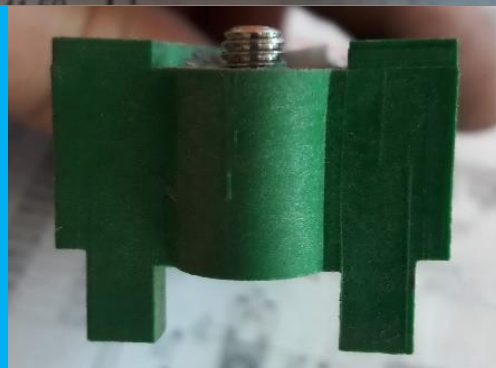


AC251

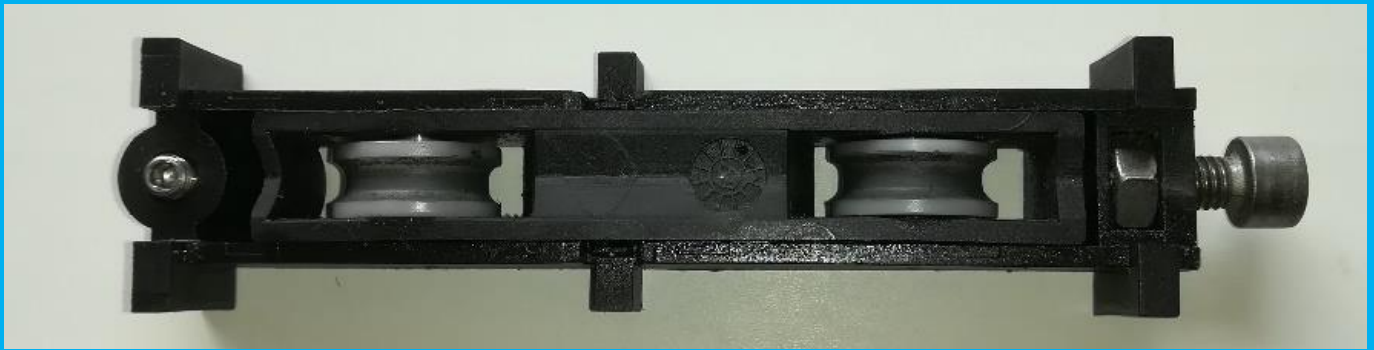
DGR4473/R2.2



AC252



AC253



✓ DGR9600 avec cage DGR0100

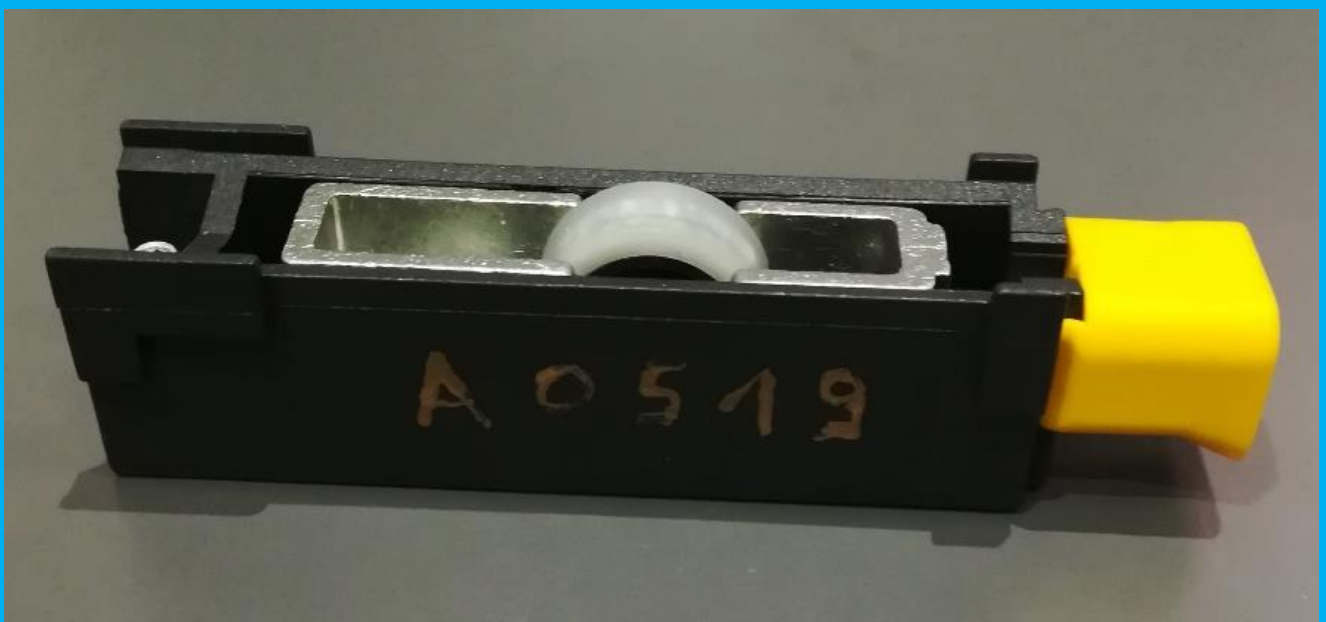


✓ DGR4583-R3

AC254

✓ H8501

✓ A0519



✓ Code cage simple E5161

✓ Code chariot A0519

AC255

✓DGR4218

✓H584



AC256



NON REMPLACÉ



AC257



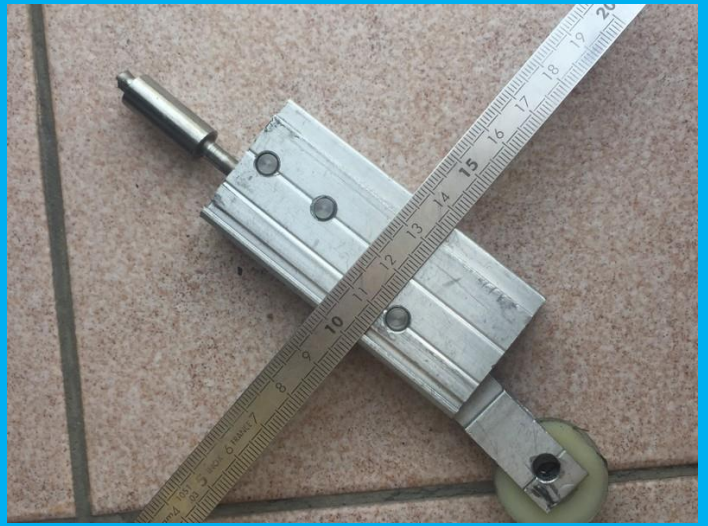
NON REMPLACÉ

AC258

NON REMPLACÉ



AC259



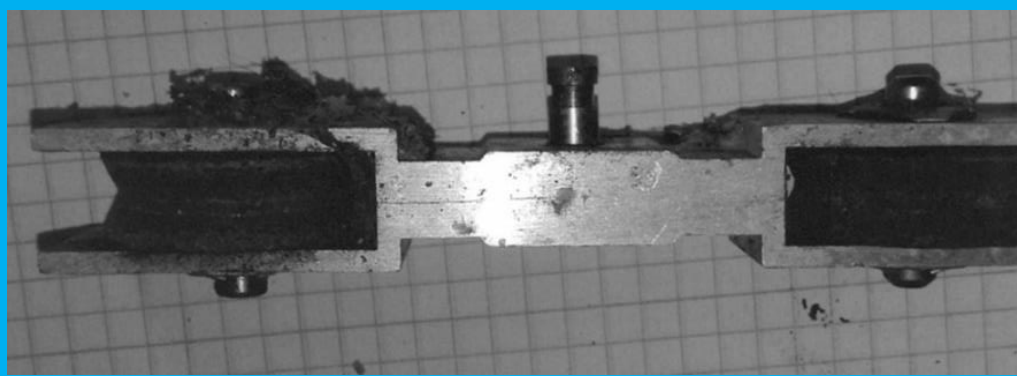
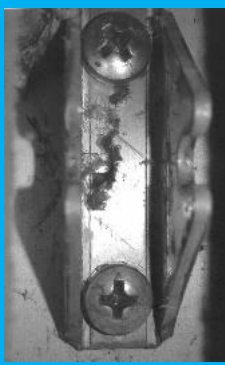
AC260



AC261



AC262



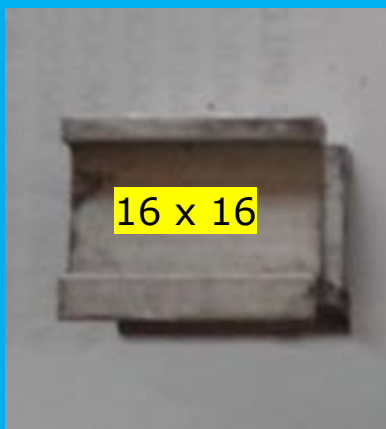
AC263

DGR4008



AC264

NON REMPLACÉ



16 x 16



AC265

NON REMPLACÉ



8 x 9

AC266



AC267



AC268



AC269



« C »16mm « A »20mm

AC270



AC271



AC272



AC273



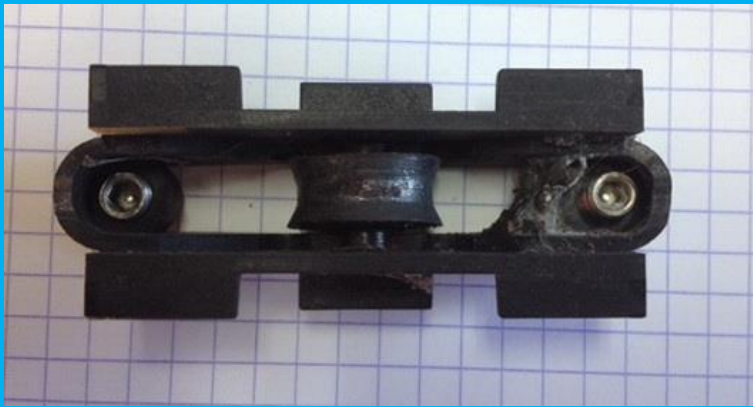
AC274



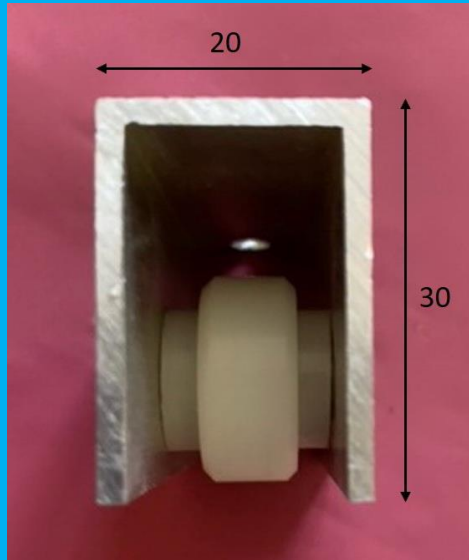
AC275



AC276



AC277



✓DGR3765 / PLAT



AC278

✓DGR4473 / R3 INOX

L : 25 H : 24



AC279

L : 14 H : 20



✓ROTO 622876

AC280